

# Keeping it Safe for Everybody



*Medics Should Routinely  
Use Body Armor*

*Raymond L. Fowler, MD, FACEP, DABEMS  
Chief, Division of Emergency Medical Services  
UT Southwestern Medical Center and  
Parkland Memorial Hospital*

A nighttime photograph of a city skyline, likely New York City, with numerous skyscrapers illuminated and their lights reflecting on the water in the foreground. The image is used as a background for the text.

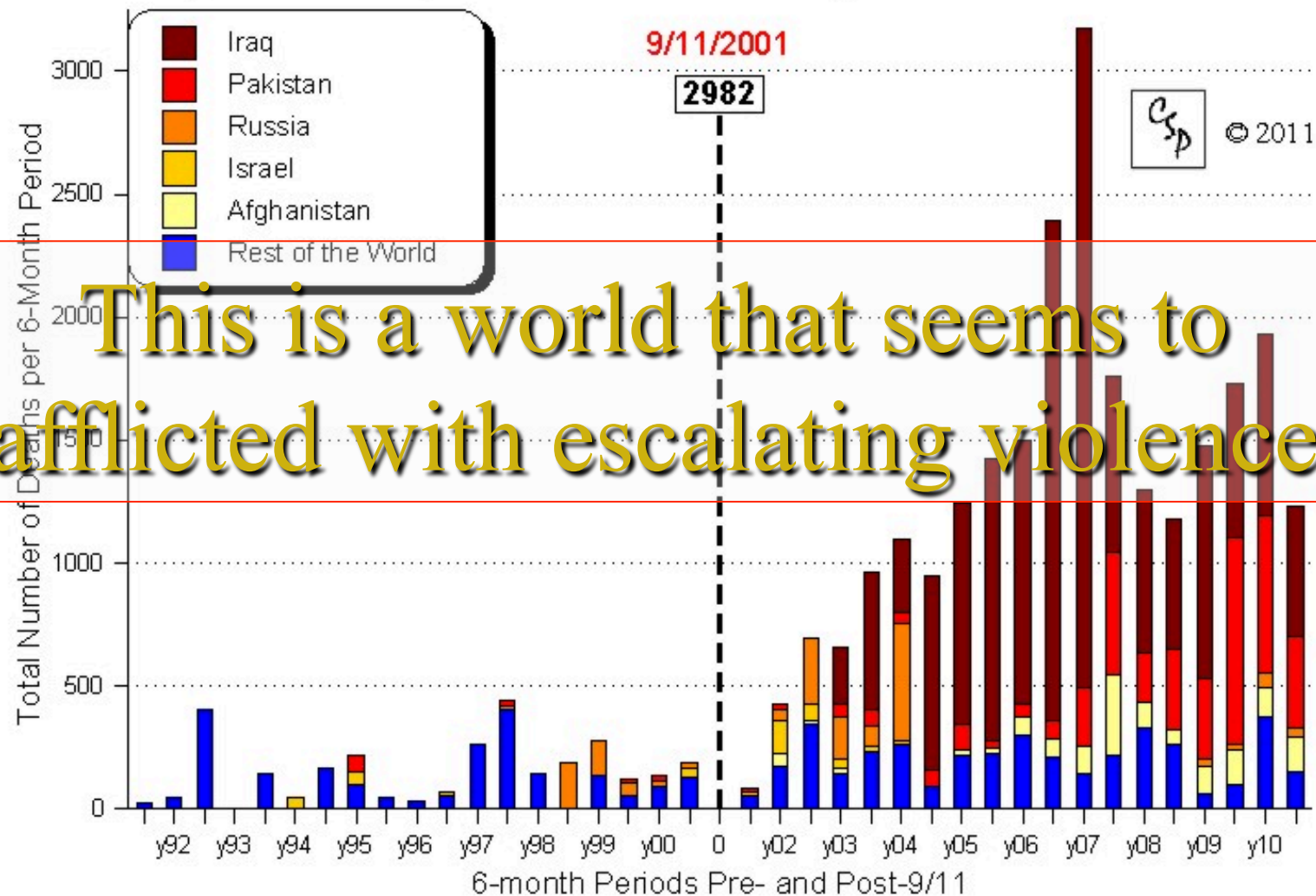
*[www.gatheringofeagles.us](http://www.gatheringofeagles.us)*

*@EaglesGather*

*#GatheringEagles15*



## High Casualty Terrorist Bombings, 3/11/92-3/10/11



A photograph of a white paramedic ambulance with orange and red stripes, parked on a city street. Several emergency responders, including police officers and paramedics, are gathered around the ambulance. One paramedic is wearing a bright yellow vest. The ambulance has "PARAMEDIC" and "AMBULANCE" written on its side, along with the number "4151" and "9-1-1".

## What's the Problem?

In rendering “Out of Hospital” care,  
we are exposed to the breadth  
of the human condition



A photograph of a riot scene, likely the 2005 New Orleans riots. In the foreground, a man in a black t-shirt and blue jeans is running towards the camera, looking back over his shoulder. To his right, another man in a maroon shirt is also running. In the background, a large crowd of people is visible, some running and others standing. The scene is chaotic and violent.

## What's the Problem?

- ✧ Street shootings
- ✧ Violence against Prehospital Personnel
- ✧ Riots...scenes out of control



A photograph of a riot scene. In the foreground, a person wearing a pink and white striped shirt and blue jeans is being pushed back by a police officer in riot gear. The officer is wearing a blue helmet and a dark vest. The background shows other rioters and police officers in a city street.

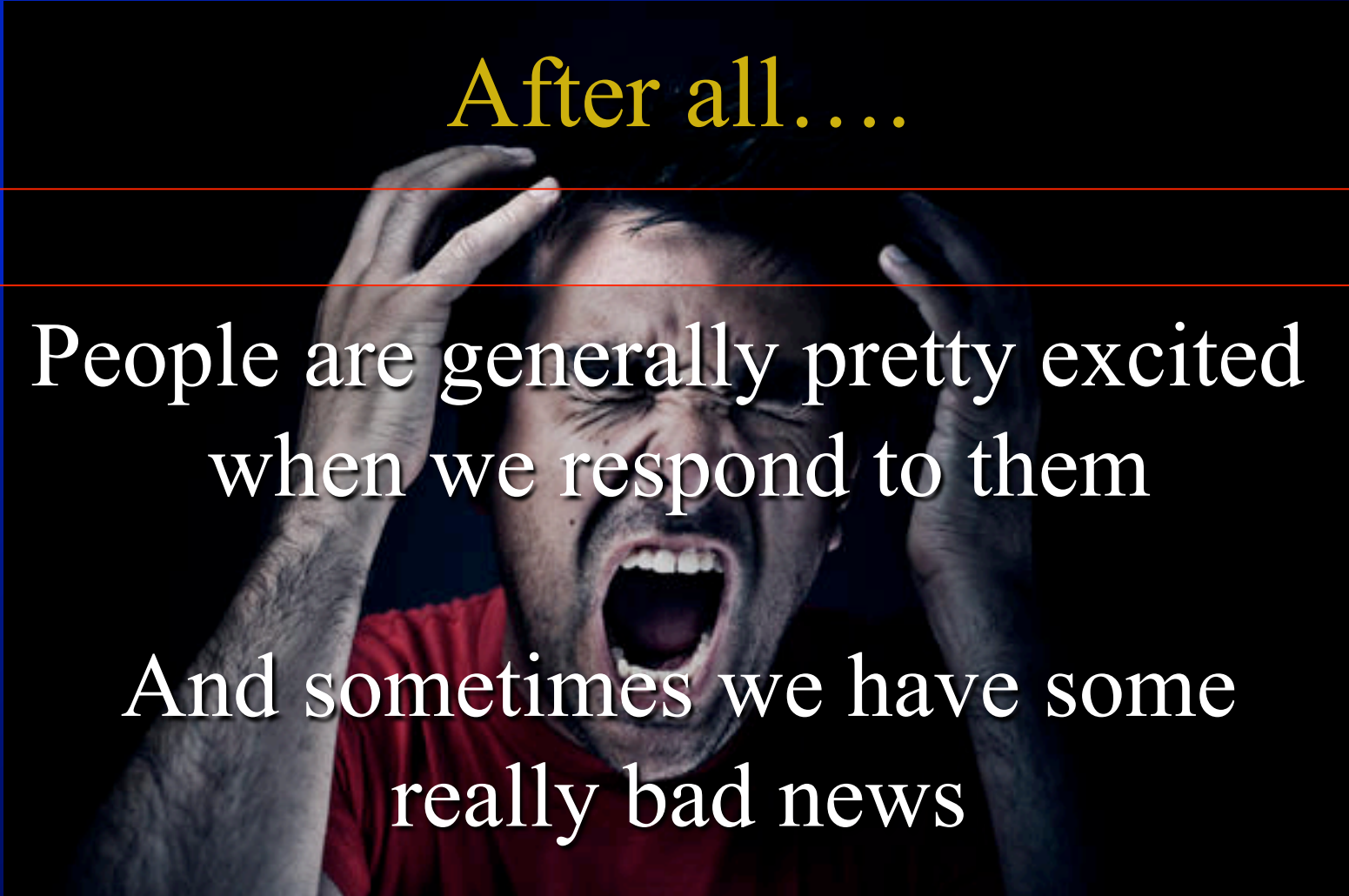
All conditions

- ✧ All ages
- ✧ All hours
- ✧ All scenes

After all....

People are generally pretty excited  
when we respond to them

And sometimes we have some  
really bad news





So, Terry, I mean REALLY!!!

Should providers enter into an  
unknown scene with.....

- ✧ No protection?
- ✧ Chest / torso protection?
- ✧ ...plus a helmet?





There is a body of work in the literature on the subject

**EMS armor:**

PPE is more than BSI protection.

Molino LN JEMS. 2004 Jul;29(7):56-8, 60, 62, 64-7. PMID: 15286618



So what are the  
potential downsides?

Would we be sending mixed messages  
to our patients through wearing  
body armor to routine scenes?



A black tactical vest, likely for law enforcement or military use, is centered in the image. It features multiple straps, buckles, and the brand name 'ARMOREXPRESS' printed in white on the front. The vest is set against a dark blue background with a subtle light gradient.

So what are the  
potential downsides?

Cost!!!

Who pays for it?



A black tactical vest, likely a body armor, is shown against a blue background. The vest features multiple straps, buckles, and patches. The brand name 'ARMOREXPRESS' is visible on several patches. The vest is designed for protection and mobility.

So what are the  
potential downsides?

Restraint of movement

A stylized graphic of a human figure, possibly a soldier, with a target on the head and chest. The target consists of concentric circles with a red bullseye in the center. The figure is white with a black outline, set against a dark blue background.

So what are the  
potential downsides?

- Would it work for:
- Not for head trauma if body armor only is worn
  - More protection with a helmet

Oh, and Terry....be careful out there





A soldier in full combat gear, including a helmet, goggles, and a vest, is kneeling on a gravel field. He is holding a rifle and a communication device. In the background, a military helicopter is parked, and another soldier is visible in the distance. The sky is blue with some clouds.

# The Military Experience

They have gotten the  
equipment right

*EMS needs to do the same*





SWAT MEDIC  
BROTHERS FOR ADVERSITY

## Tactical Medicine

They have gotten the  
equipment right

*EMS needs to do the same*

SWAT LIFE







What are we NOT talking about???



[Home](#) / [Business](#) / [Local](#)

## Tucson Tech: His body armor concept could one day hit market

[f Recommend](#) 0 [Tweet](#) 0 [g+1](#) 0 [Pin it](#) [Share](#) [Print](#) [Email](#) [★](#)





*“The carpenter-turned-inventor says his Tucson company's patented nano-technology can turn aluminum into a nearly impenetrable, lightweight armor for bodies and vehicles.*

*The technology - with the sci-fi name of Kryron - also can create ultra-conductive and corrosion-resistant wire and electrical components, or help form tough metal plating on plastics and other non-metals, says Bourque, founder and CEO of Bourque Industries Inc.”*

A poll of the Eagles Coalition  
January 20, 2015  
7 a.m. – 1 p.m. Central time

*34 responding agencies*  
*Represents some 60,000,000*  
*citizen lives covered*



No policy on use of body armor  
by EMS Personnel

*21 EMS Medical Directors  
replied that no policy is in place  
for body armor use routinely  
by EMS Personnel  
(SWAT-use typically mandatory)*

Body Armor Permitted but  
not Mandatory

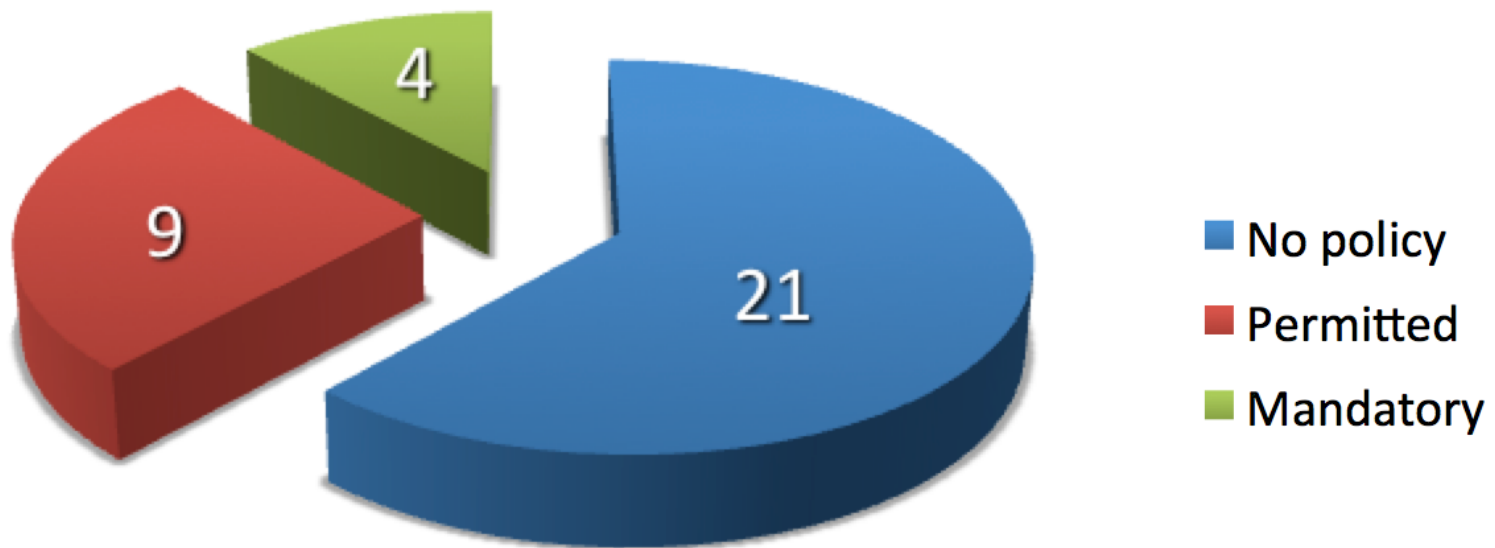
*9 EMS Medical Directors  
replied that body armor use by  
EMS Personnel is permitted*



## Body Armor Provided Mandatory

*4 EMS Medical Directors  
replied that body armor use by  
EMS Personnel is mandatory and  
equipment is provided*

# Eagles Poll: Does your EMS System have a Policy on Body Armor?





## De-identified Quotes 1

“During the times of civil unrest that ---- (has) had yes, but not routine use of body armor during normal day to day operations.”

## De-identified Quotes 2

“I believe we should but don't currently have a policy in place. We have SWAT medics with full PPE. I think all personnel should have some form of protection just as a medic should wear a face shield when intubating.”

## De-identified Quotes 3

“Our tactical medics have them. We are in the process of outfitting a rescue squad fro, the fire department that would have them. No more than 5.”



## De-identified Quotes 4

“We have body armor in all ALS ambulances as part of our rapid assessment medical support program for active shooter incidents.”

## De-identified Quotes 4

“We’ve offered it through the Department to all field personnel since October of 2006. If they opt out, they must sign a waiver. The only policy as to when to wear them is at the discretion of the member.”

## De-identified Quotes 5

“No body armor in ----. I would reject any use of this except for our tactical personnel on tactical assignments. I firmly believe that there should be no confusion as to the roles of Police from Fire/EMS, and don't want the public to begin to see blurring of the roles”



## De-identified Quotes 6

“You hear about violence against EMS personnel every day...the trend will be that we have to make that level of PPE available to the principles...”

*Is Body Armor a form of PPE???*



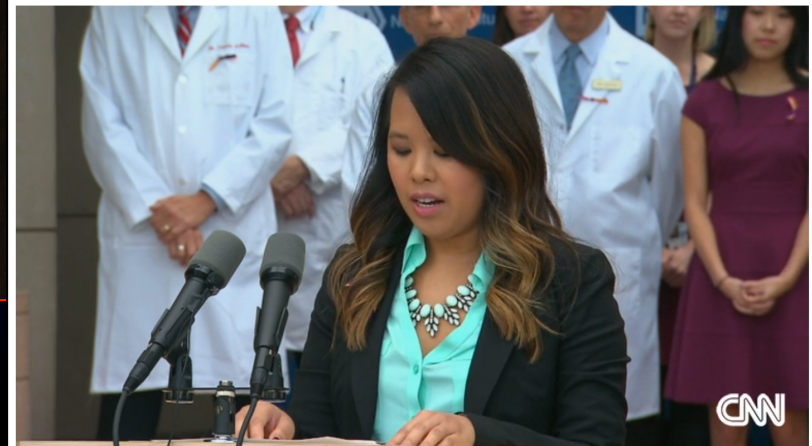
**BREAKING  
NEWS**

Shooter targeted friends at school cafeteria ta  
witness. "It wasn't just random." Watch live no



## What will nurse do after beating Ebola? Hug her dog, of course

By **Michael Martinez** and **Mark Bixler**, CNN  
updated 3:19 PM EDT, Fri October 24, 2014



Source: CNN

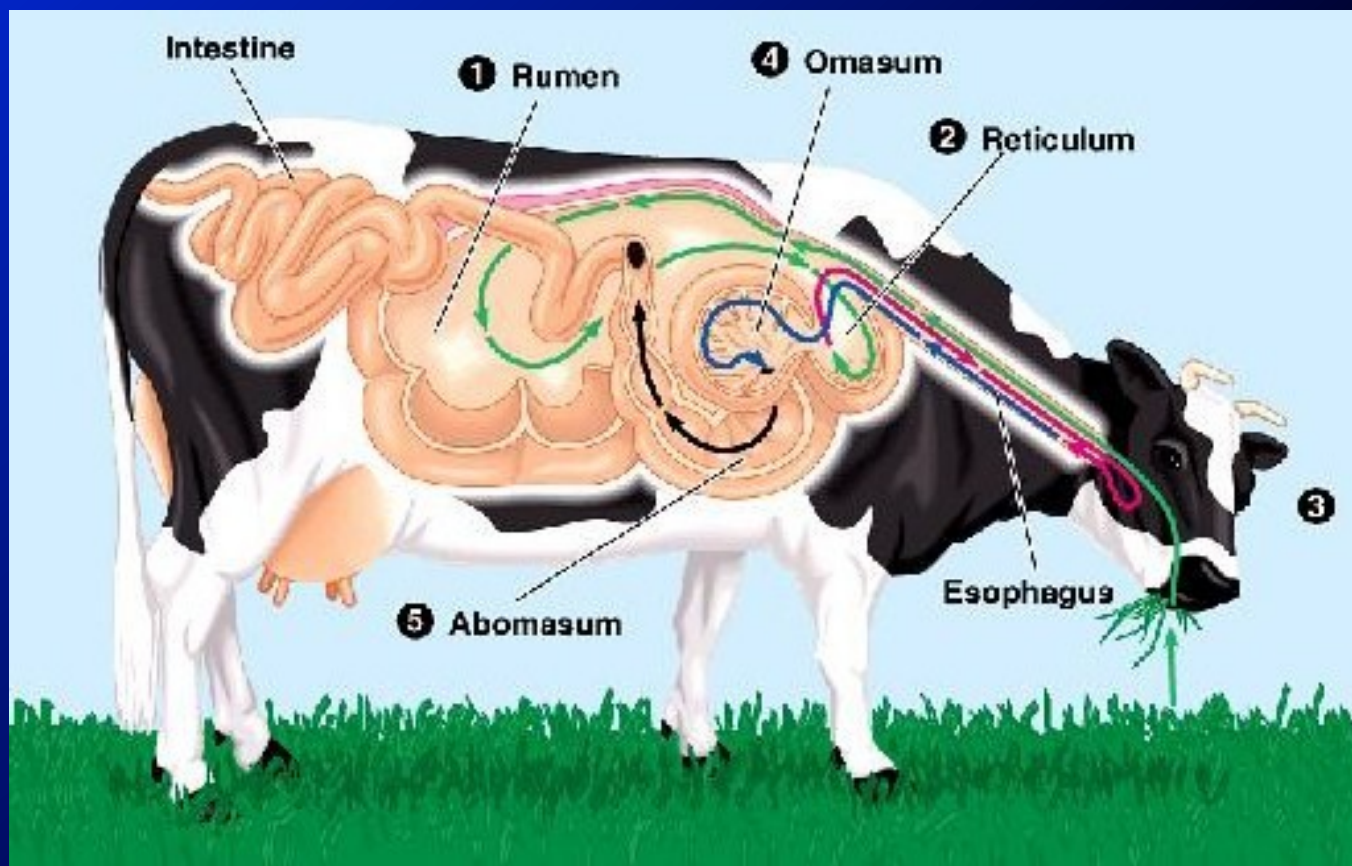
But in the final analysis...  
nothing will protect  
against every possibility







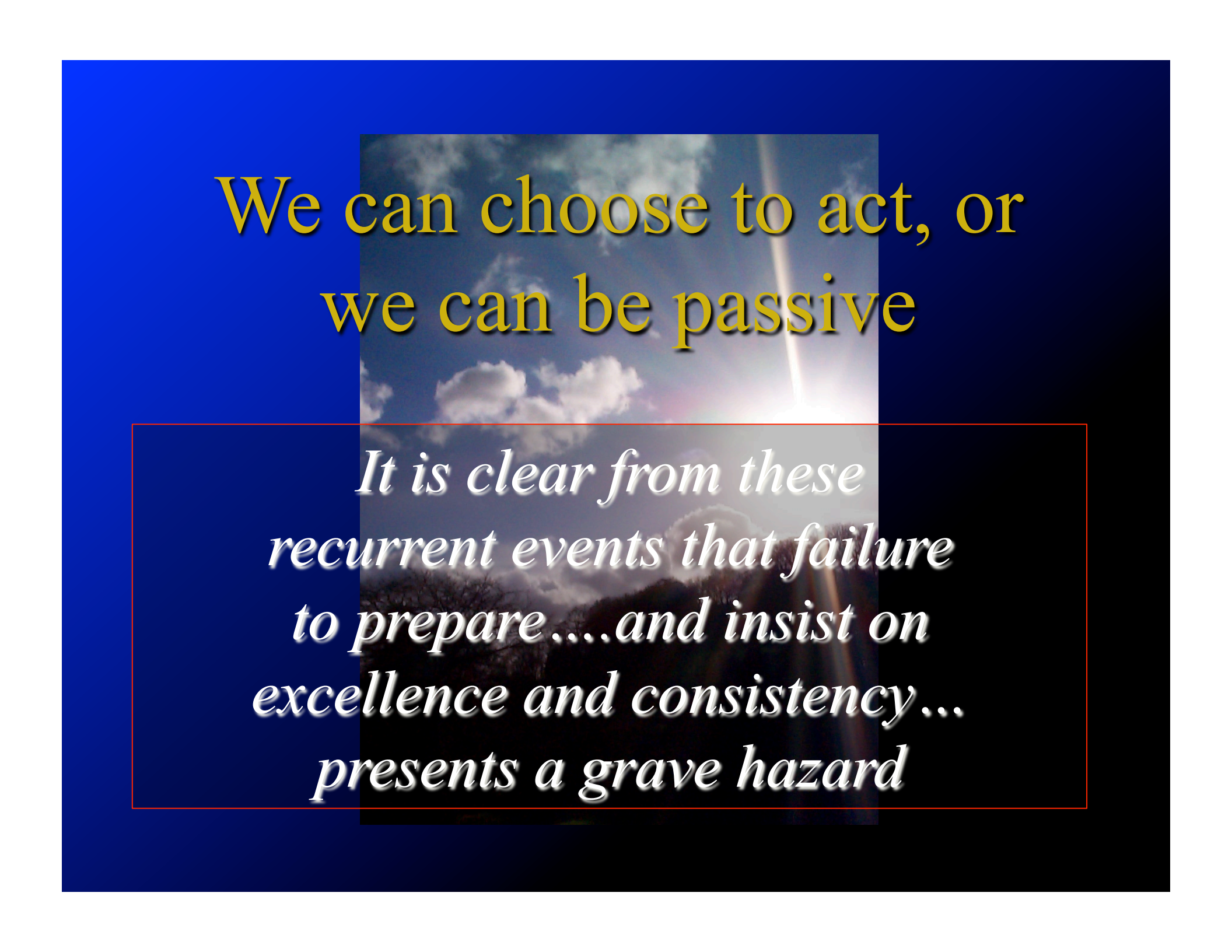
# *Ruminations upon Closing*



# The “dirty fact” of EMS History

- ✧ *We have been giving “lip service” to the use of PPE for generations*
- ✧ *We are very, VERY lucky that more providers have not gotten hurt*
- ✧ *We must broaden the definition of PPE to include as many areas as we can that protect our personnel*





We can choose to act, or  
we can be passive

*It is clear from these  
recurrent events that failure  
to prepare....and insist on  
excellence and consistency...  
presents a grave hazard*

A photograph of a man and a woman in a close, confrontational pose, both with their mouths open as if shouting. The woman is on the left, with long dark hair, and the man is on the right, with short brown hair. The image is framed by a thin red border. The background of the entire slide is a solid dark blue.

*I AM*  
*SHOUTING!!!*





*And Terry, may you live in  
interesting times*

*Crisis is **DANGER**  
mixed with opportunity*

*Always create the crisis  
on YOUR timeline!*





*? or !*

*[www.gatheringofeagles.us](http://www.gatheringofeagles.us)*