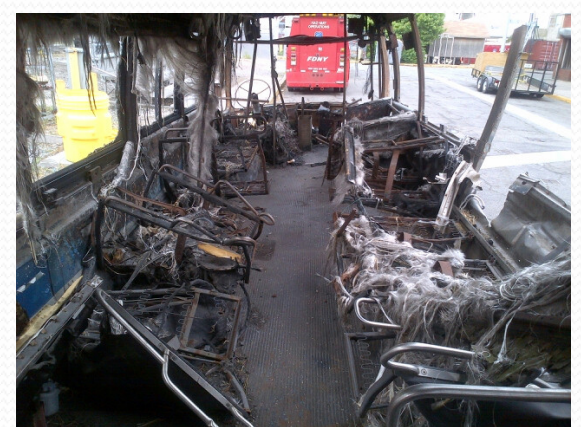
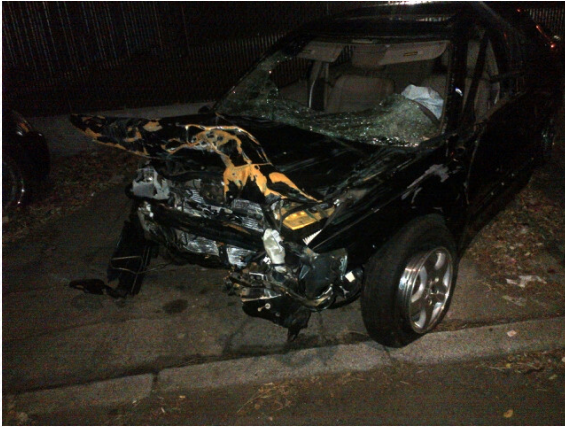


NYC - FDNY

Disaster Du Jour

Glenn Asaeda, MD, FAAEM, DABEMS
Chief Medical Director
Fire Department of New York





NYC -FDNY

Snow Blizzard Contingency Plan



Most Recently Readied

January 22, 2016

- Winter Snow Storm Jonas – 26.8 inches NYC
- Pre-Plans in Place
- Not Implemented



Class Order

- Issued by the Chief Medical Director
- All patients will be transported to the closest appropriate 911-receiving ED (no more further hospital requests honored)
- CFRs if on scene ≥ 30 minutes and EMS arrival not imminent, through OLMC, may RMA or transport
- Hospital requests for diversion will not be honored
- At certain dangerous wind speeds, ambulances will be sheltered at pre-designated locations