

FROM SUPER SUNDAY TO FAT TUESDAY: PREPARING FOR THE NFL BIG EVENT AND MARDI GRAS



JEFFREY M. ELDER MD FAAEM

DIRECTOR OF EMS
CITY OF NEW ORLEANS

CLINICAL ASSISTANT PROFESSOR
LSU EMERGENCY MEDICINE

 **LSUHealthNewOrleans**
HEALTH SCIENCES CENTER

NEW ORLEANS EMS

- 108 FT and 40 PRN staff
- 55,000 CFS in 2012
- 10-12 ambulances at peak + 2 sprints
- Paramedic/EMT staffing
- NOFD First Responders
- 3 private EMS services in New Orleans



IT'S JUST A PARTY....

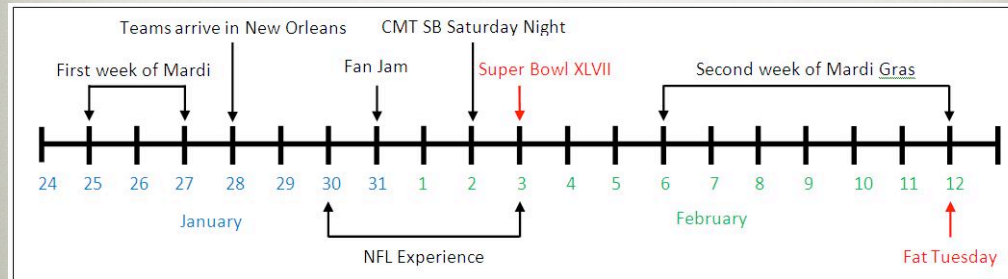
THE SUPER BOWL/MARDI GRAS COMBO...

- Over \$700 million dollar impact on the City of New Orleans
- Hundreds of thousands in town to celebrate both events.
- 3 weeks - Mardi Gras / Super Bowl / Mardi Gras
- Easy, right?

NOT SO QUICK...



THREE WEEKS OF EVENTS



PLANNING

- Public Safety treated all 3 weeks as one large event



Allowed for staffing/respite



WE CAN
HANDLE THIS



WE HAVE MARDI GRAS
EVERY YEAR

NOEMS HAS HAD YEARS TO
FIGURE IT OUT

THE SUPER BOWL IS ITS OWN MONSTER



PLANNING CROSSED ALL
DISCIPLINES

SUPER BOWL
SUBCOMMITTEES REPORTED
TO THE SUPER BOWL
EXECUTIVE COMMITTEE

MEDICAL/PUBLIC HEALTH
HAZMAT
CREDENTIALING

MEDICAL SPORTS GROUP

SB Exec. Cmtte.
Subcommittees
credentialing – important

PLANNING

BEGAN OVER A YEAR PRIOR TO SUPER BOWL XLVII

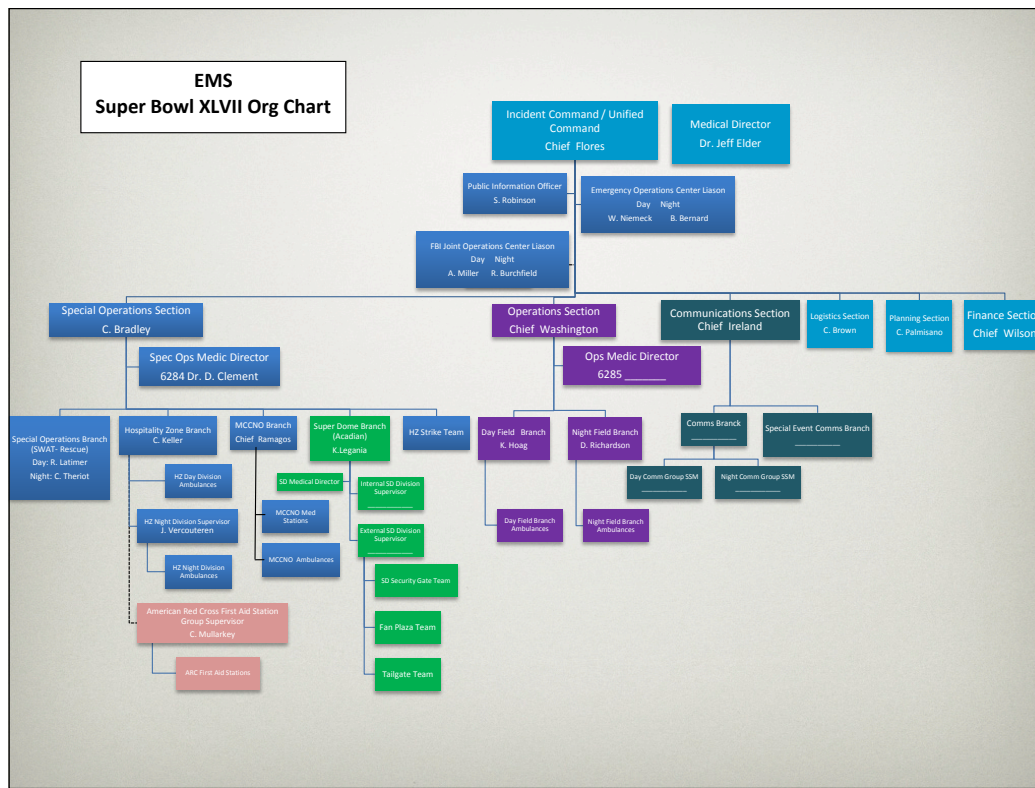
VISIT TO INDIANAPOLIS OPENED MANY EYES TO WHAT
WOULD BE NEEDED IN NEW ORLEANS



we put on Mardi Gras every year.. we can handle this
EMS, PD, Fire, NOHSEP visited SB XLVI in Indy

FOUR MAJOR AREAS OF RESPONSIBILITY

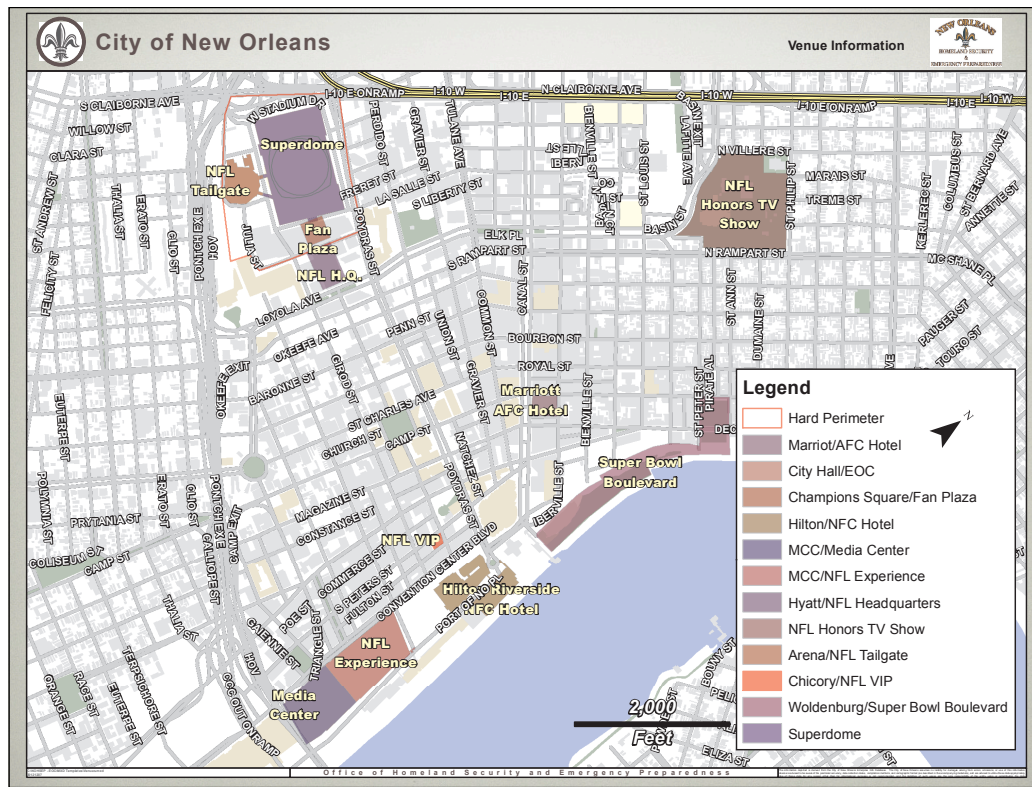
- 911 Street Operations
 - NOEMS + Mutual Aid
- “Hospitality Zone”
- NFL Experience
- Mercedes-Benz Superdome
 - Acadian Ambulance



Many moving pieces

STREET OPERATIONS

- Mutual Aid Heavily Utilized
- 1 PSAP / Dispatch Center
- 13-15 day ambulances
- 8-12 night ambulances
- 1 supervisor / 1-2 sprint medics per 12 hour shift



Superdome
FQ

MCC
SB BLVD

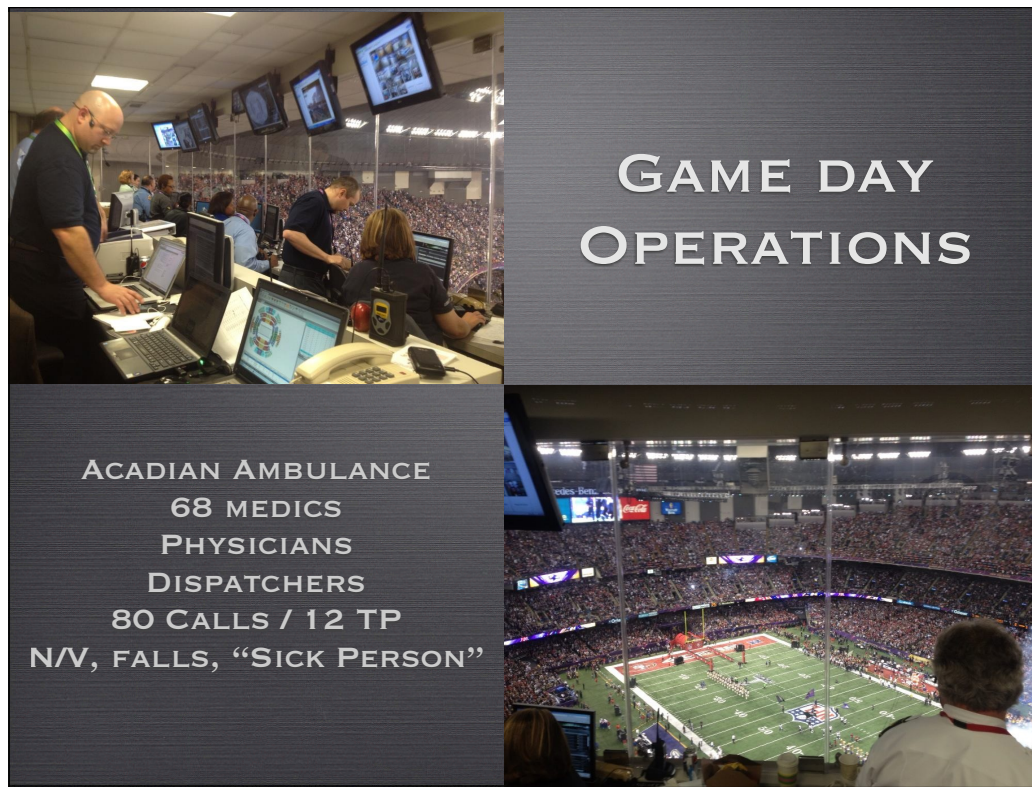
HOSPITALITY ZONE

- 1 Supervisor + Dispatcher
- 6 - 8 Ambulances
- 4 Special Response vehicles
- 3 Bike Teams
- Red Cross First Aid Stations
- Command Staff
- EMS Volunteer Foot Teams

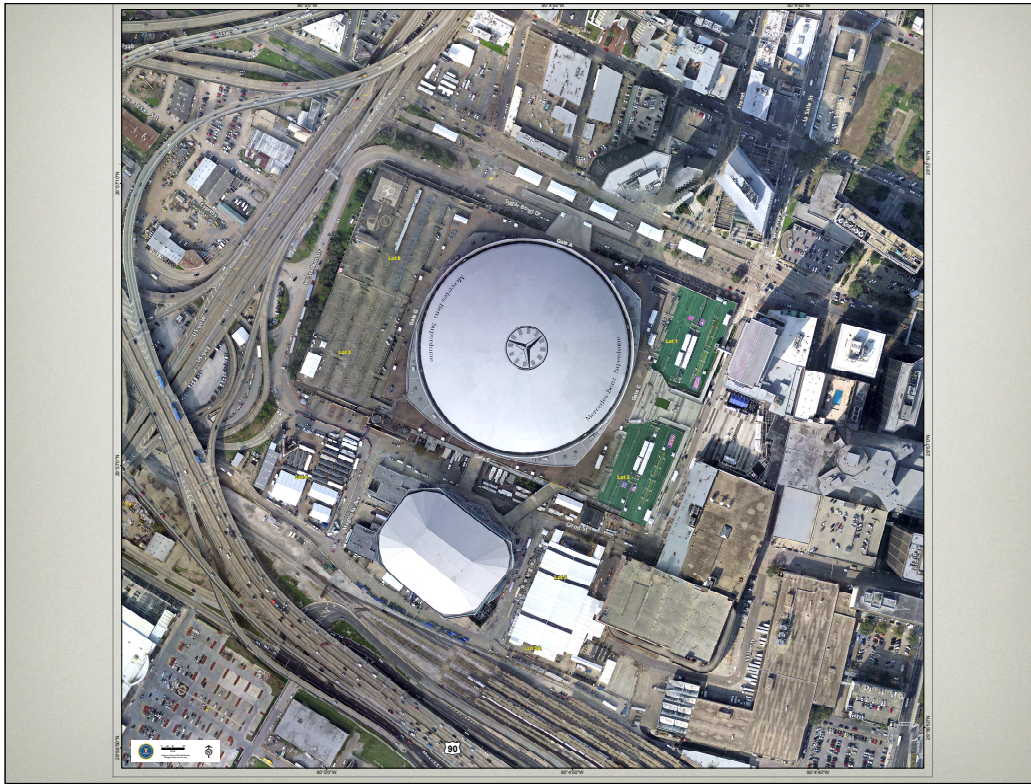
NFL EXPERIENCE

- 4 Medical Stations
- 1 EMS Deputy Chief / Command Center
- 1 Special Response Vehicle
- 3-5 Foot Teams
- 2-4 Ambulances

90,000 visitors – not as busy as Indy (FQ)



1 CVA



Superdome / perimeter
Acadian Ambulance

THE BLACKOUT



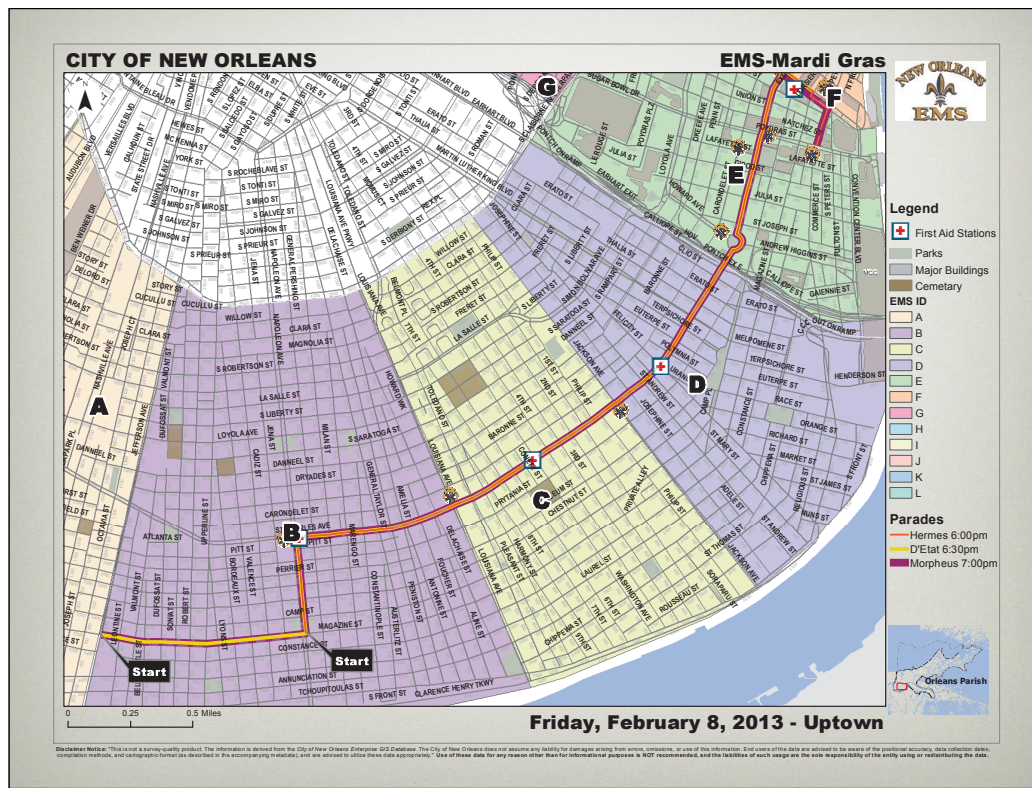
EOC – Data Gathering/communications

MARDI GRAS 2013



1st weekend

2nd weekend – Wed – Tues. after SB



geographic nightmare – splits the city. Code – around the parade to TP
 8–12 ambulances
 6+ sprint EMS vehicles
 2–4 SRVs
 2 EMS bike teams
 ARC FA stations
 VIGOR foot teams

A LITTLE CROWD



1 major incident – Bourbon Street shooting 4 victims – 3 discharged, 1 to OR

CHOOSE THE RIGHT RESOURCE



MOUNTED HELP



SUMMARY



- Over 2000 event related CFS + First Aid
- 2 VF arrests with ROSC on the parade route

“5” TIPS FOR SUCCESS

- Start early - have someone “own” the event through planning
- Use your institutional knowledge to make the process easier
- Reach out to mutual aid partners early
- Don’t forget your regular operations - the community still wants their service too!!
- Planning never ends - be flexible when the plan needs to change

late night call volume surge



Thanks to our NOEMS crews and mutual aid partners