

10 Take-Homes from 10 Tense Days of Tenacious Tornadoes in 10 Minutes

***EMS State of the Science
A Gathering of Eagles XVI – Dallas, TX 2014***

***Jeffrey M. Goodloe, MD, NREMT-P, FACEP
Medical Director, Medical Control Board
EMS System for Metropolitan Oklahoma City & Tulsa
Professor & EMS Section Chief
Department of Emergency Medicine
University of Oklahoma School of Community Medicine***



EMS System for Metropolitan Oklahoma City & Tulsa



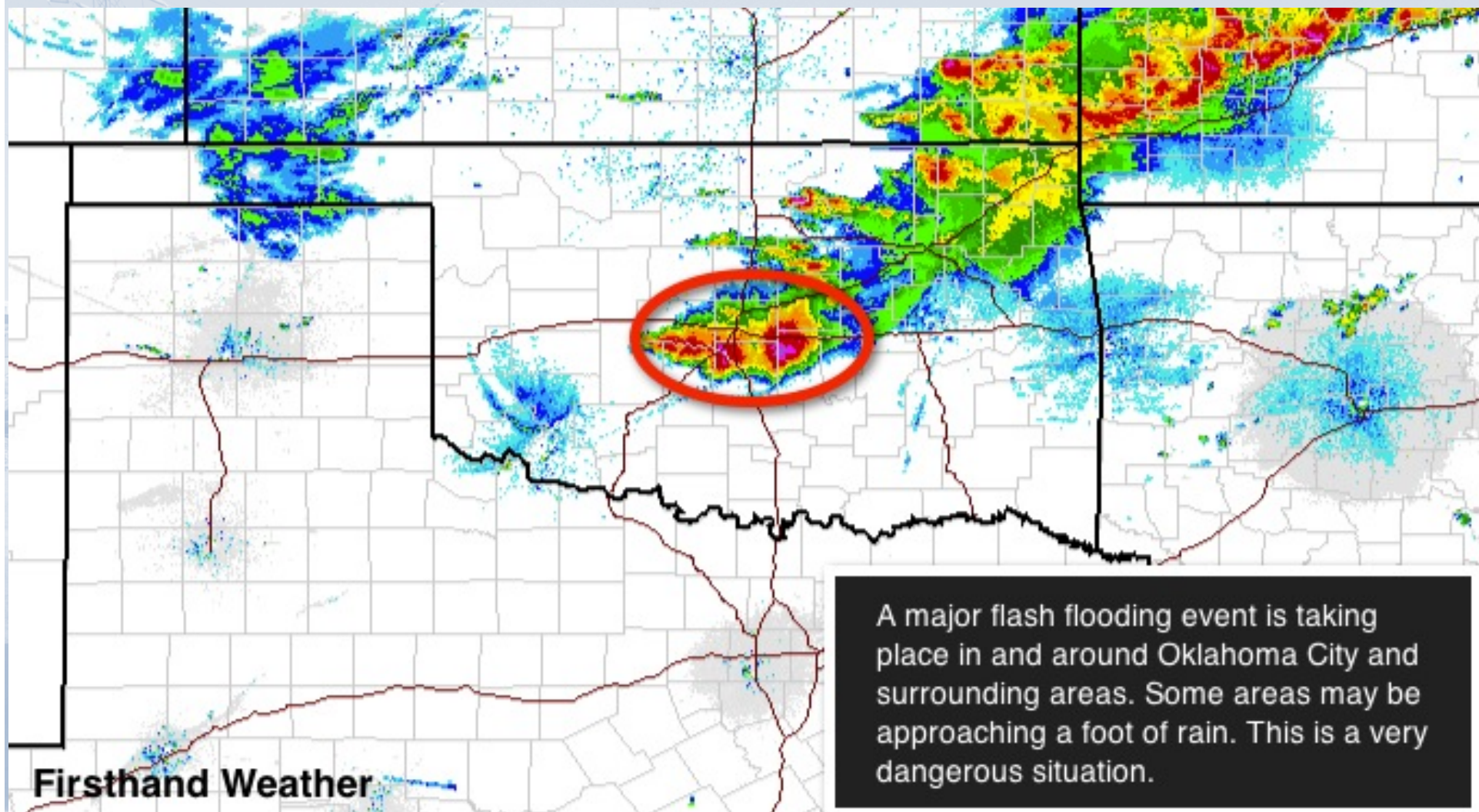
1,100 square miles
Population 1.6M day/1.2M night
197,334 calls (2013)
144,496 transports (2013) 73%
3,700 professionals (700 Paramedics)
Public Utility Model Ambulance
Paramedic + EMT
Fire Dept Emerg. Medical Response
EMT Engines/Trucks
Paramedic Squads/Engines



If you ever wish for interesting
times...

you might seriously rethink that wish.





A major flash flooding event is taking place in and around Oklahoma City and surrounding areas. Some areas may be approaching a foot of rain. This is a very dangerous situation.

ENHANCED FUJITA SCALE

	Wind Speed (MPH)
EF-0	65-85
EF-1	86-110
EF-2	111-135
EF-3	136-165
EF-4	166-200
EF-5	over 200

Take Home Point #1

Sometimes big is big
...and bad is bad







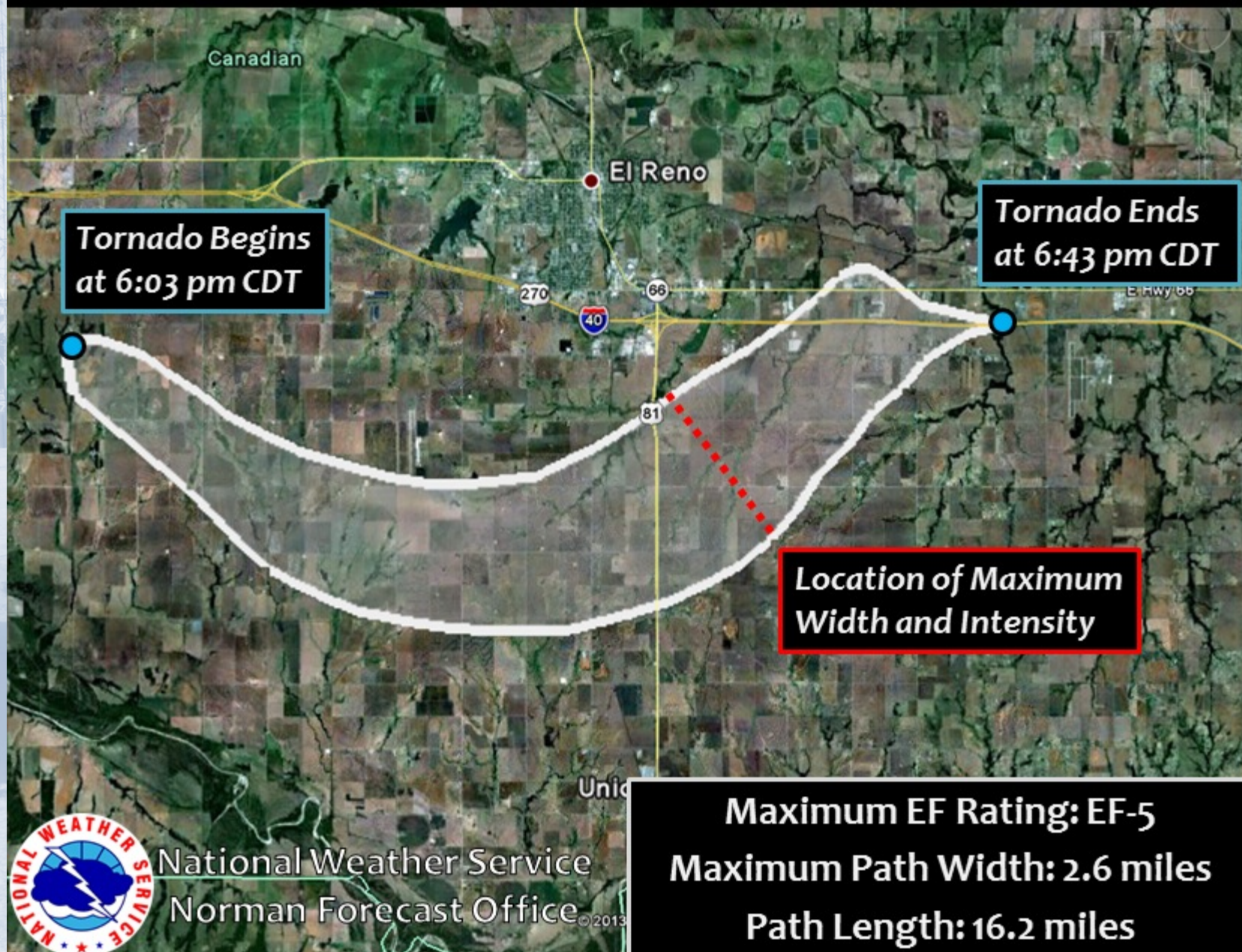
Take Home Point #2

**In a massive tornado, there is no
“take it all in” first before action.**





El Reno Tornado - May 31, 2013



Take Home Point #3

**Prior training is the only thing
you'll have in modifying
initial operations basic instincts
otherwise**





Take Home Point #4

Fast is slow and slow is fast





Take Home Point #5

**In a massive tornado, “success”
is safety in operations**







Take Home Point #6

**Remember what a smart public
will do...if they can**









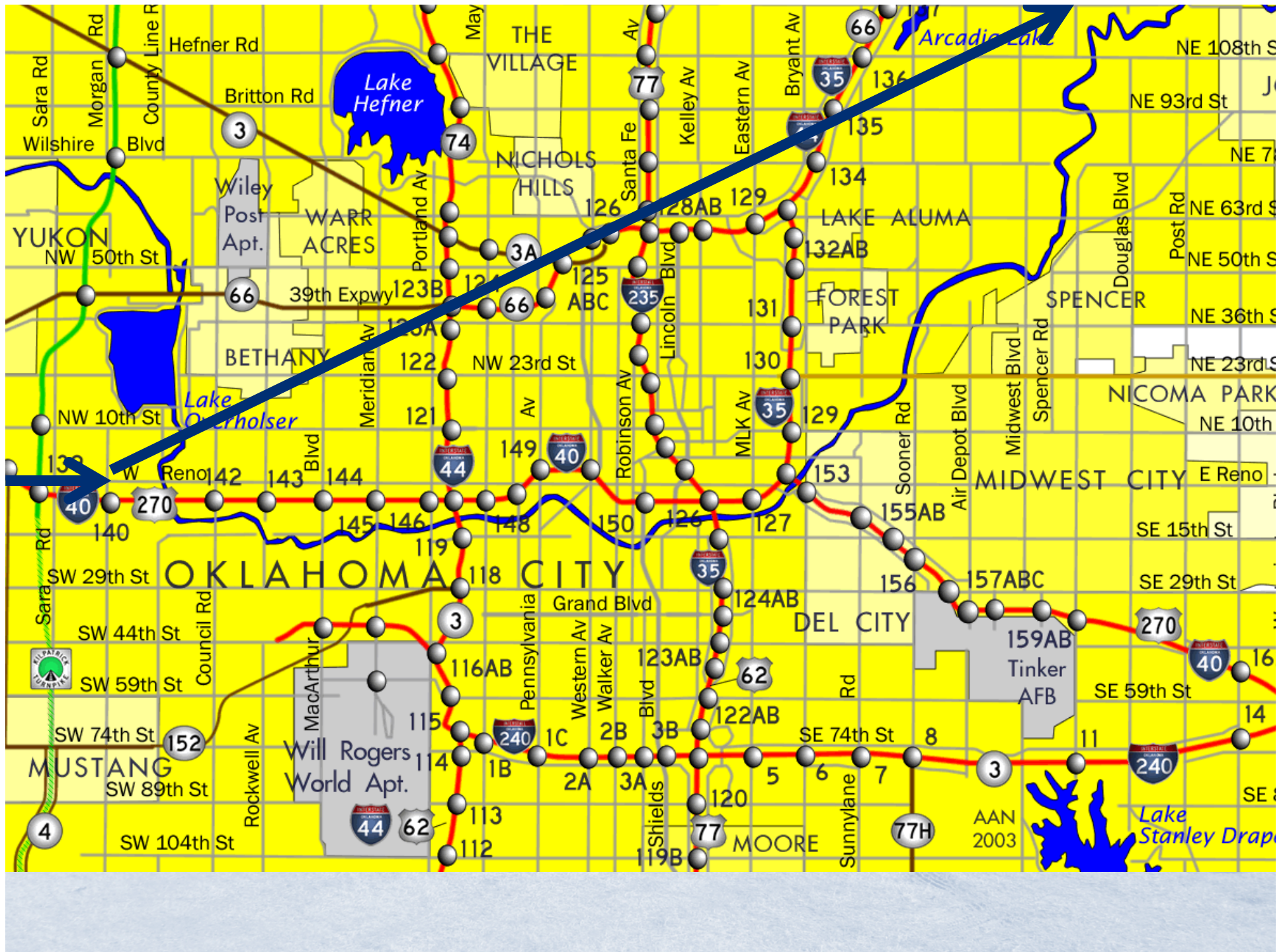




Take Home Point #7

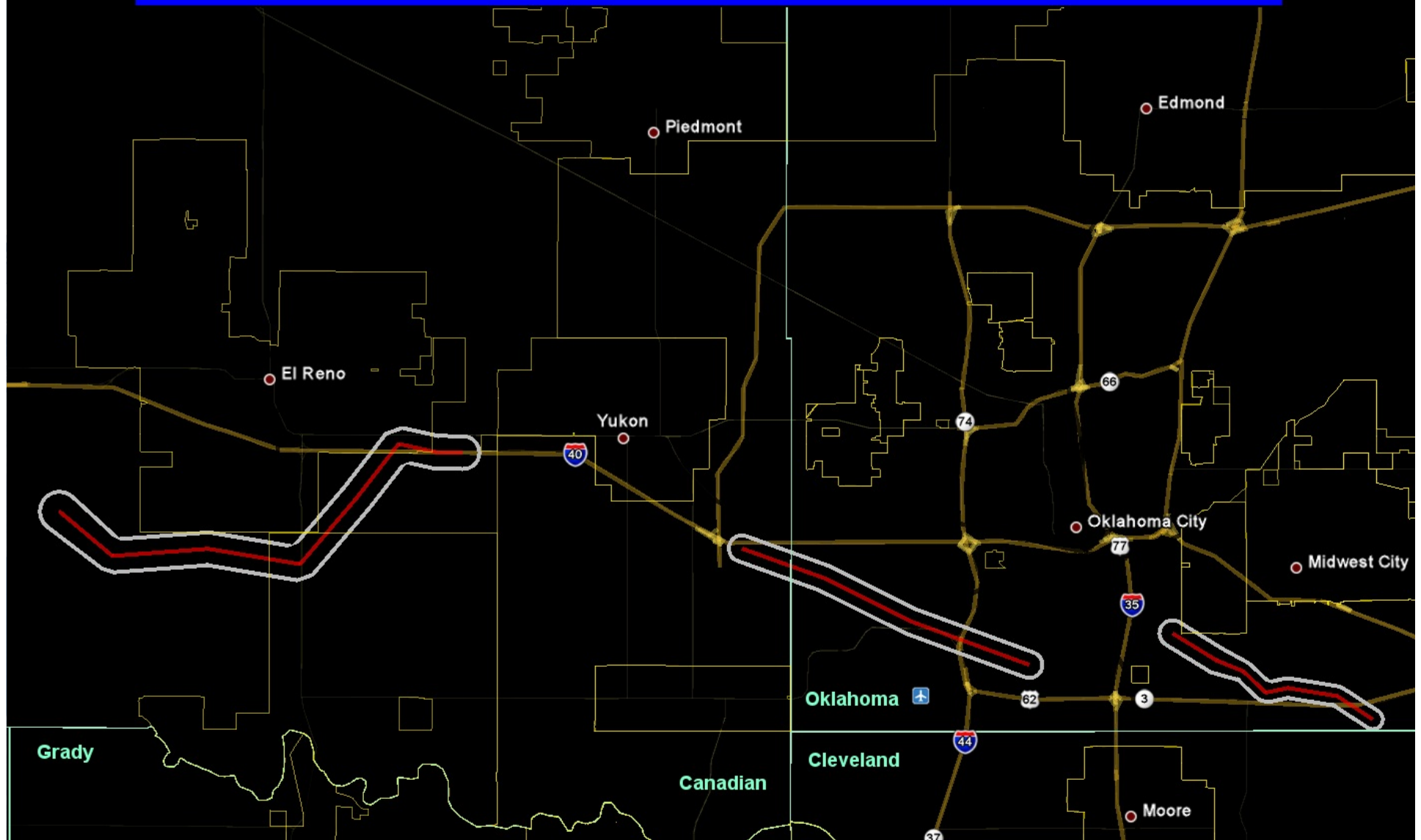
**Anticipate all that you can, but
still keep your options open**

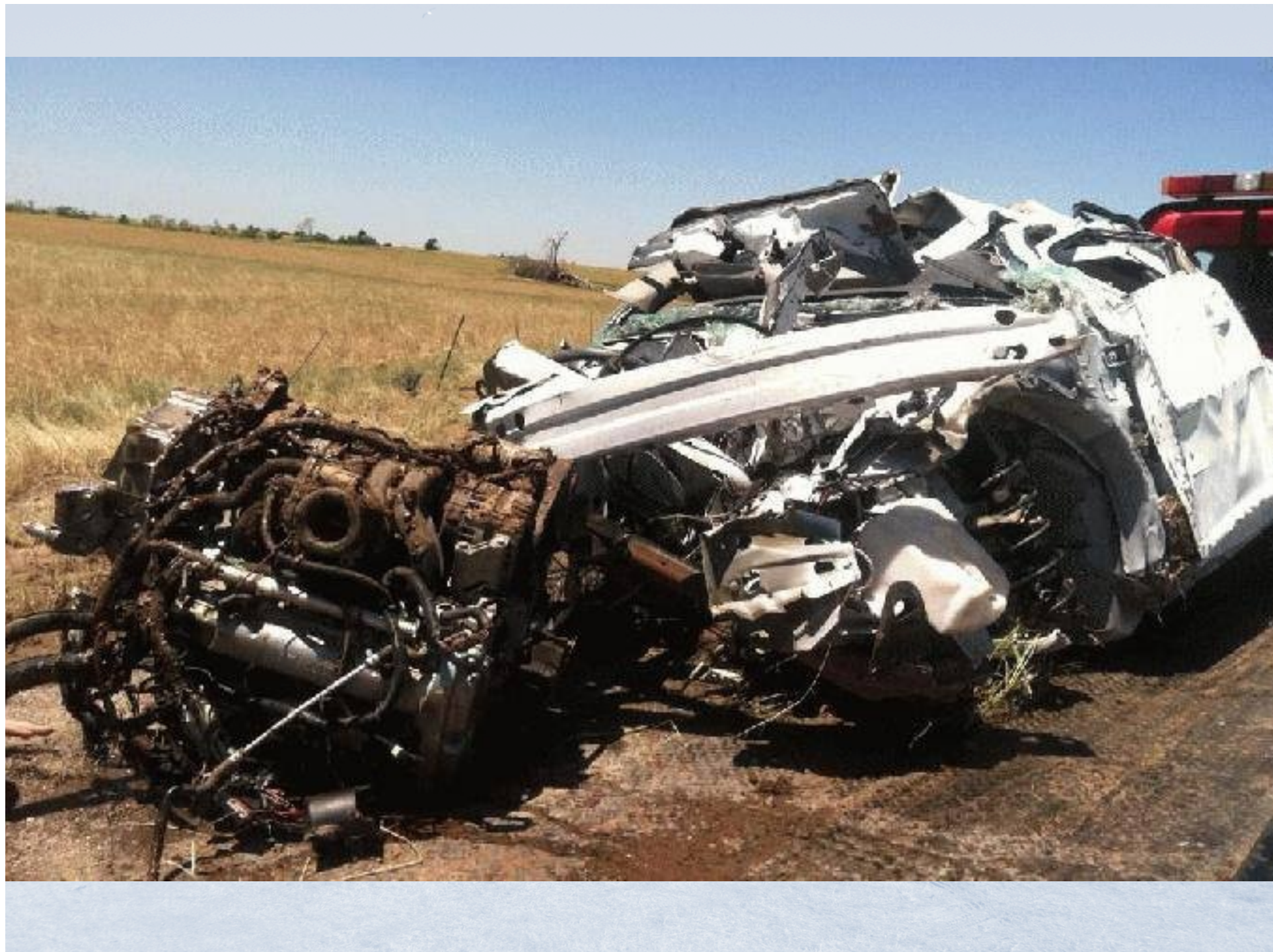






Preliminary Tornado Tracks for the May 31, 2013 El Reno and South OKC Tornadoes







Near El Reno

Friday

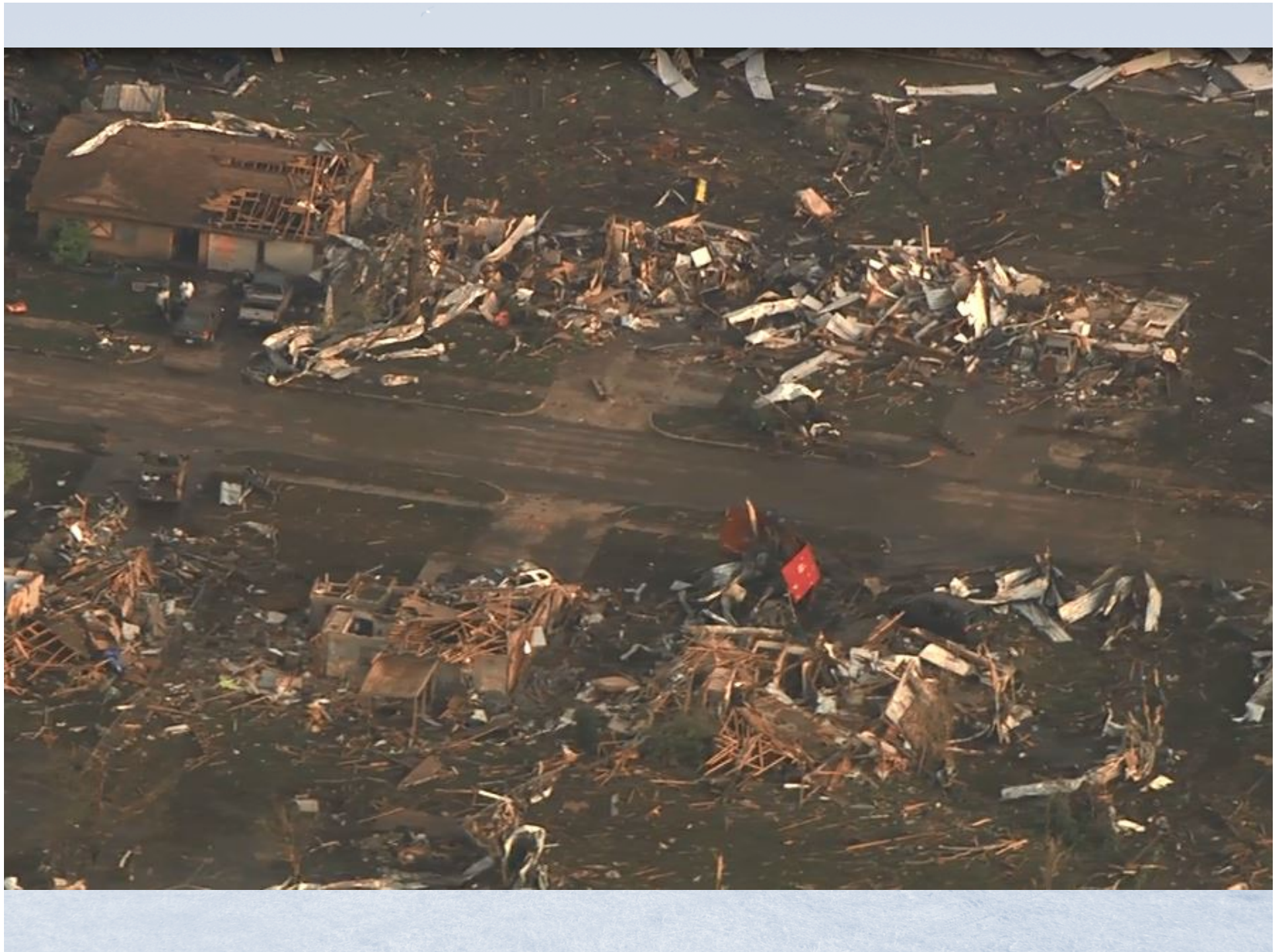
NewsChannel 4

57° 6:05

Take Home Point #8

**EMS is an important function
...among several important functions**





Take Home Point #9

**In a massive tornado,
the “life saving” is just the start
of operation overload**







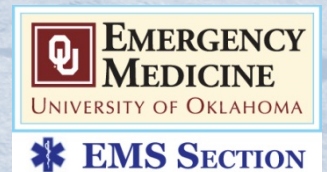




Take Home Point #10

**Keep the role of medical director
(and other key leadership)
in perspective**

**...ahead of events
during events
and after events**



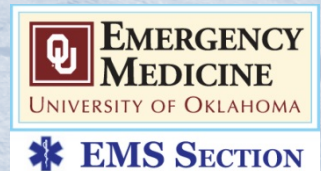


Subanalysis of Point #10

- As it turns out...
- 130 emails
- 42 text messages
- 10 voicemails



Mean something bad has happened.



Don't forget

- Goodness that shines brightest in the dark
- Sense of mission circulated by EMS blood type
- Resourcefulness of EMS professionals
 - New and veteran
- Sometimes as humbling as it can be, the two best things a medical director can do:
 - Pray for the safety of personnel and the public
 - Stand behind the decisions made



Dedicated to the men and women in public service that responded capably, safely, and with humanity when good people needed their help in these dangerous days.





TULSA



OKLAHOMA CITY



**EMERGENCY
MEDICINE**
UNIVERSITY OF OKLAHOMA



EMS SECTION



Contact Info:
jeffrey-goodloe@ouhsc.edu
Office of the Medical Director
405-297-7173