

Chicago *CARES* about OHCA!

Joseph Weber, MD
EMS Medical Director
Chicago EMS System (West)
Assistant Professor of Emergency Medicine
Cook County Hospital

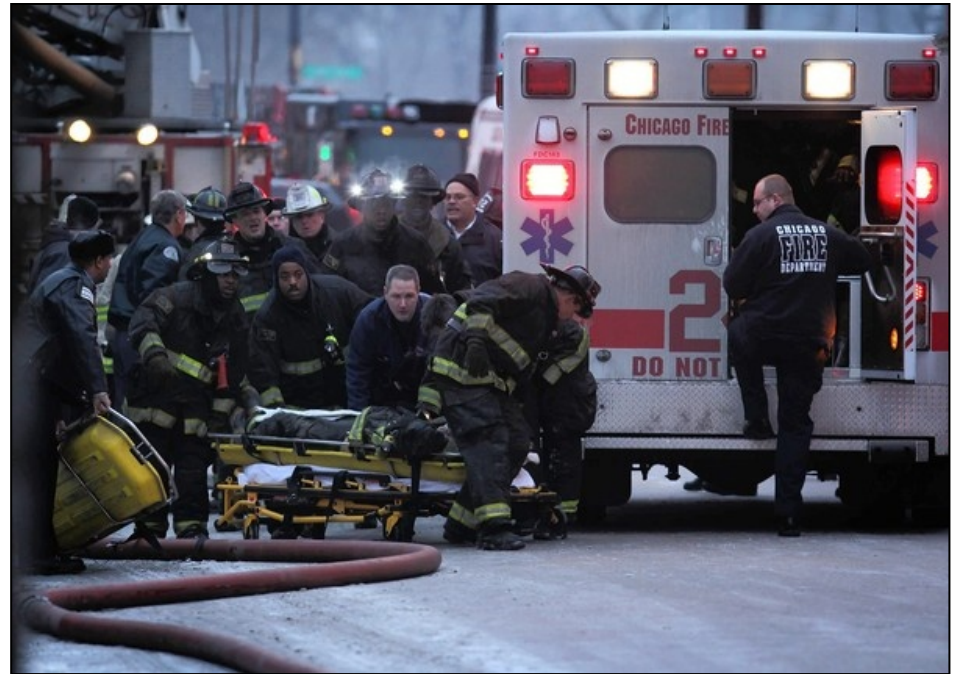




Chicago EMS



- Illinois EMS Region XI (EMS System for City of Chicago)
- EMS Medical Directors Consortium (4 Hospitals/Offices)
- 33 acute care participating hospitals
- Chicago population of 2.8 million
- Fire based multi-tiered system
- 60 ALS Ambulances
- 15 BLS Ambulances
- 71 ALS Fire companies
- 86 BLS Fire companies
- 1,200 Paramedics
- 2,200 EMT's
- 237,662 transports (CFD)
- 1800 OHCA annually



*“ So if you are going to have a cardiac arrest,
where should you try not to be? The obvious
choices would be*

Chicago.”



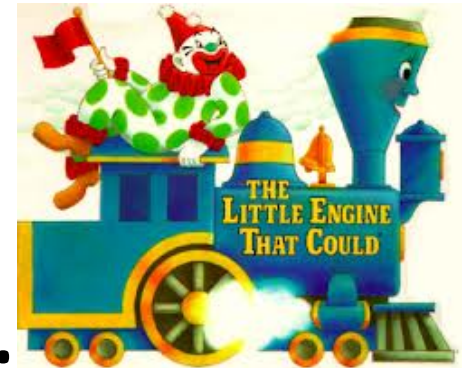
Mickey S. Eisenberg, MD
Resuscitate, page 120
2009

Outcome of CPR in a Large Metropolitan Area — Where are the Survivors?

- 2% overall survival
- 3% for shockable rhythms
- Outlined strategies for improving survival



We think we can.....



2011
Cardiac Arrest
Working
Group

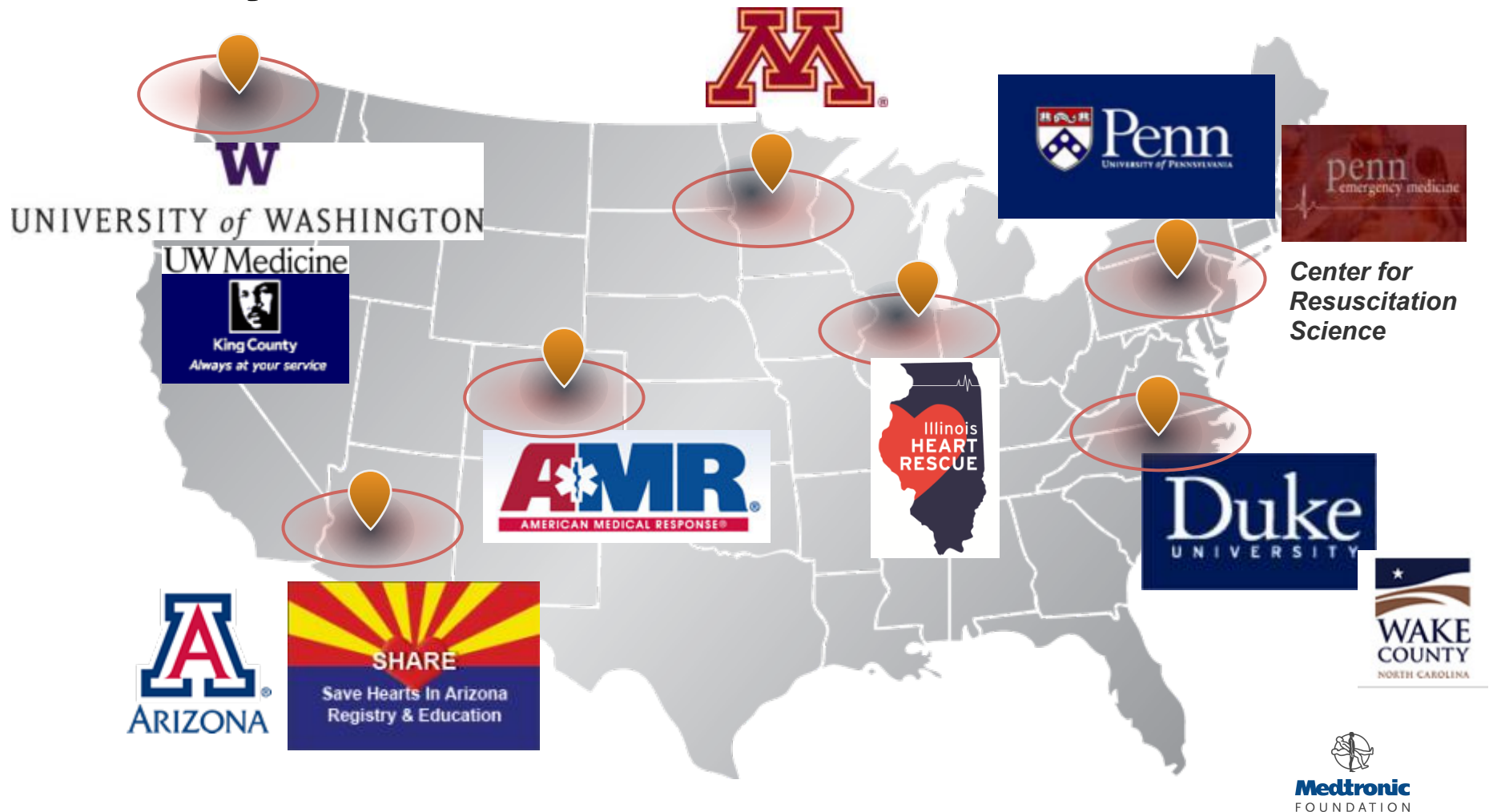
Dec 2012
Simulation
based training
begins



Jan 2012
New protocol
didactic
training
begins

Jan 2013
EMS MD over
dispatch

January 2013



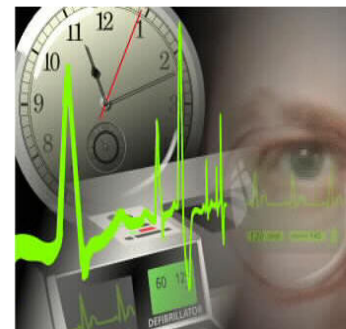
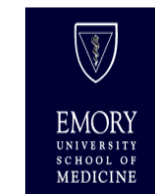
September 1st 2013



Welcome To:

Cardiac Arrest Registry to Enhance Survival (CARES)

Sponsored by:



Log In to myCares™

Username:

Password:

Log In

Did you forget your password?

[More information on Cares](#)

[Press on Cares](#)

[Frequently Asked Questions](#)

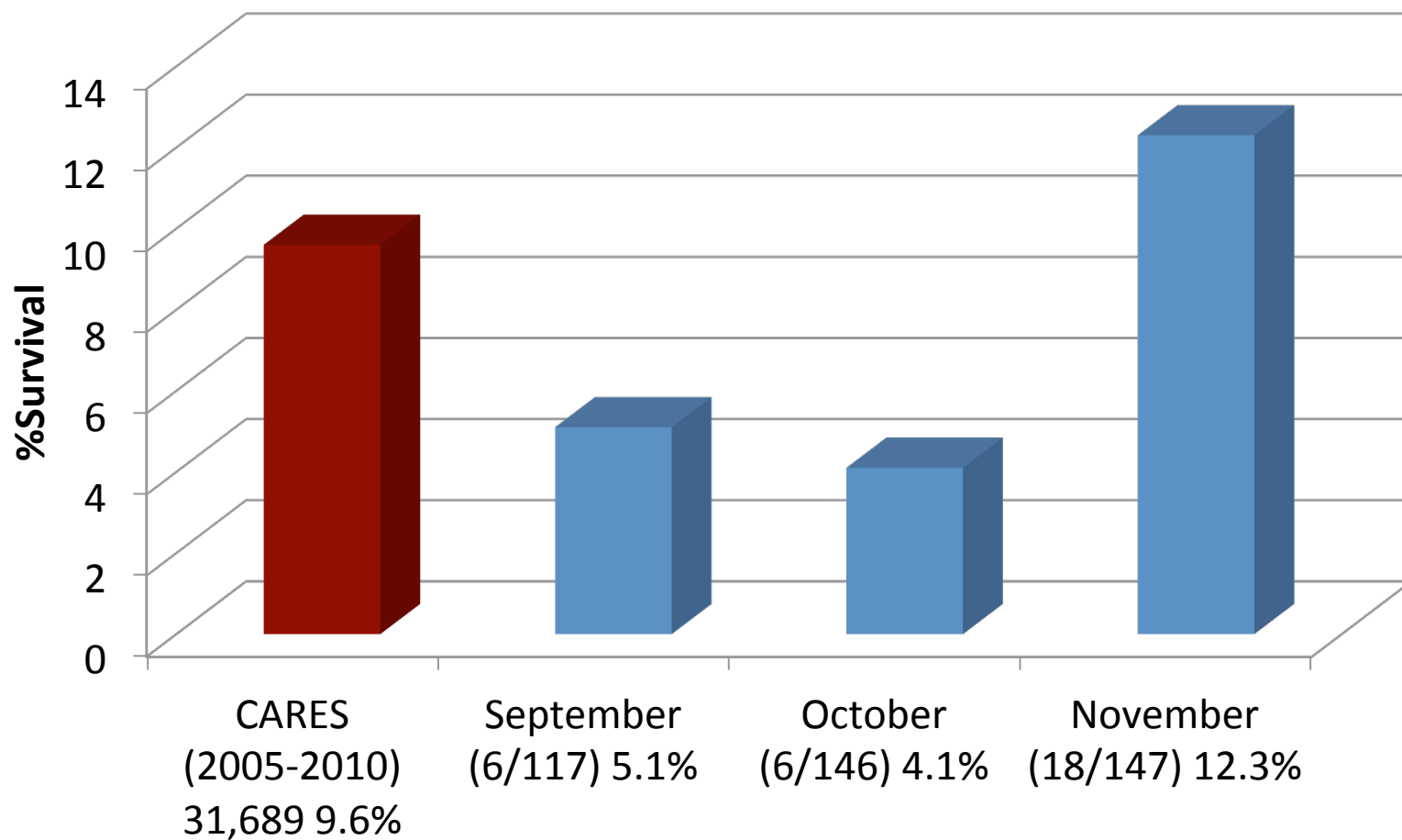
[Current Cares Participants](#)

CARES

The Cardiac Arrest Registry to Enhance Survival (CARES) was initiated in October 2004 as a cooperative agreement between the Center for Disease Control and Prevention (CDC) and the Department of Emergency Medicine at Emory University School of Medicine to identify incidents of prehospital cardiac arrest. The CARES Program is designed to consolidate all essential data

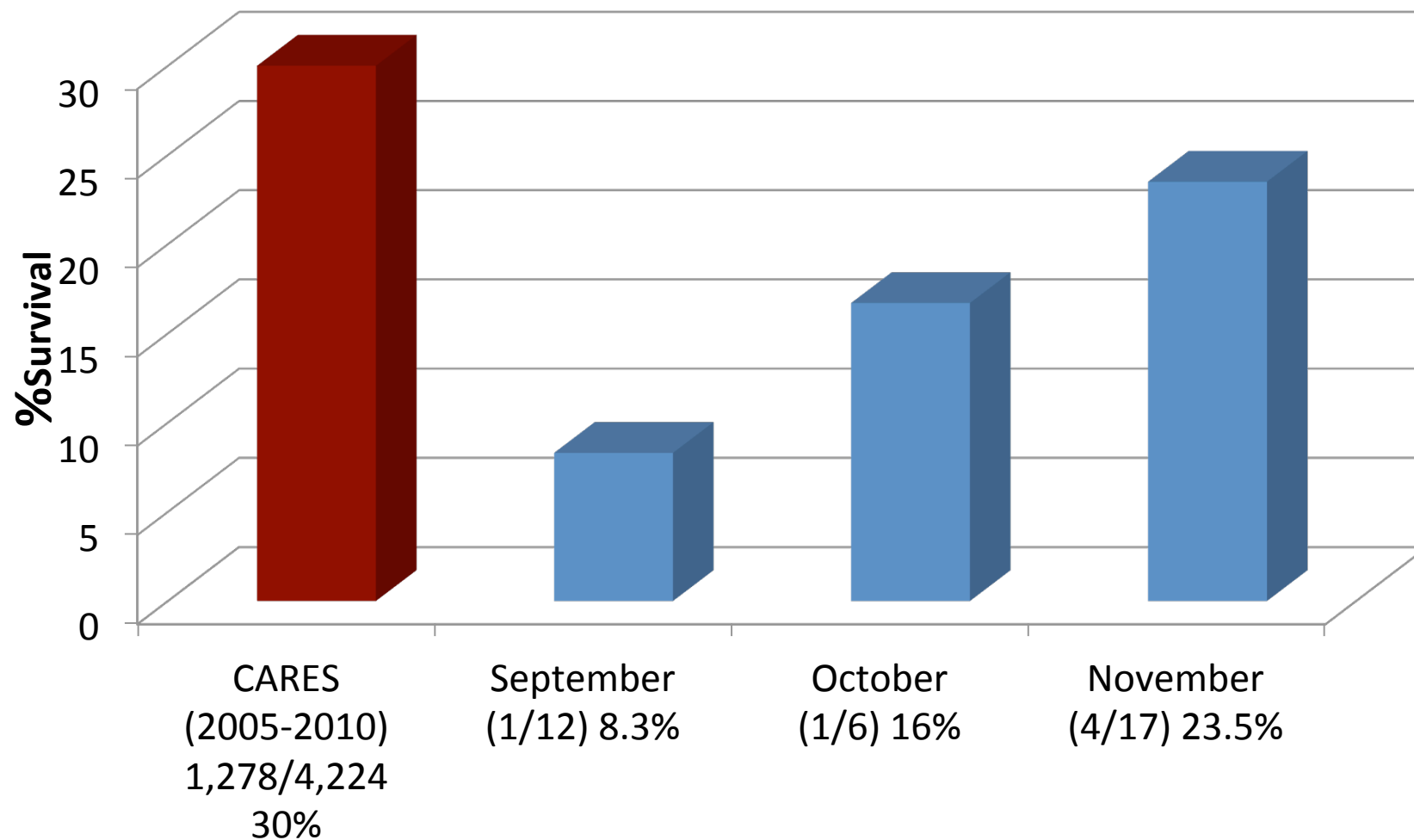


Overall Survival



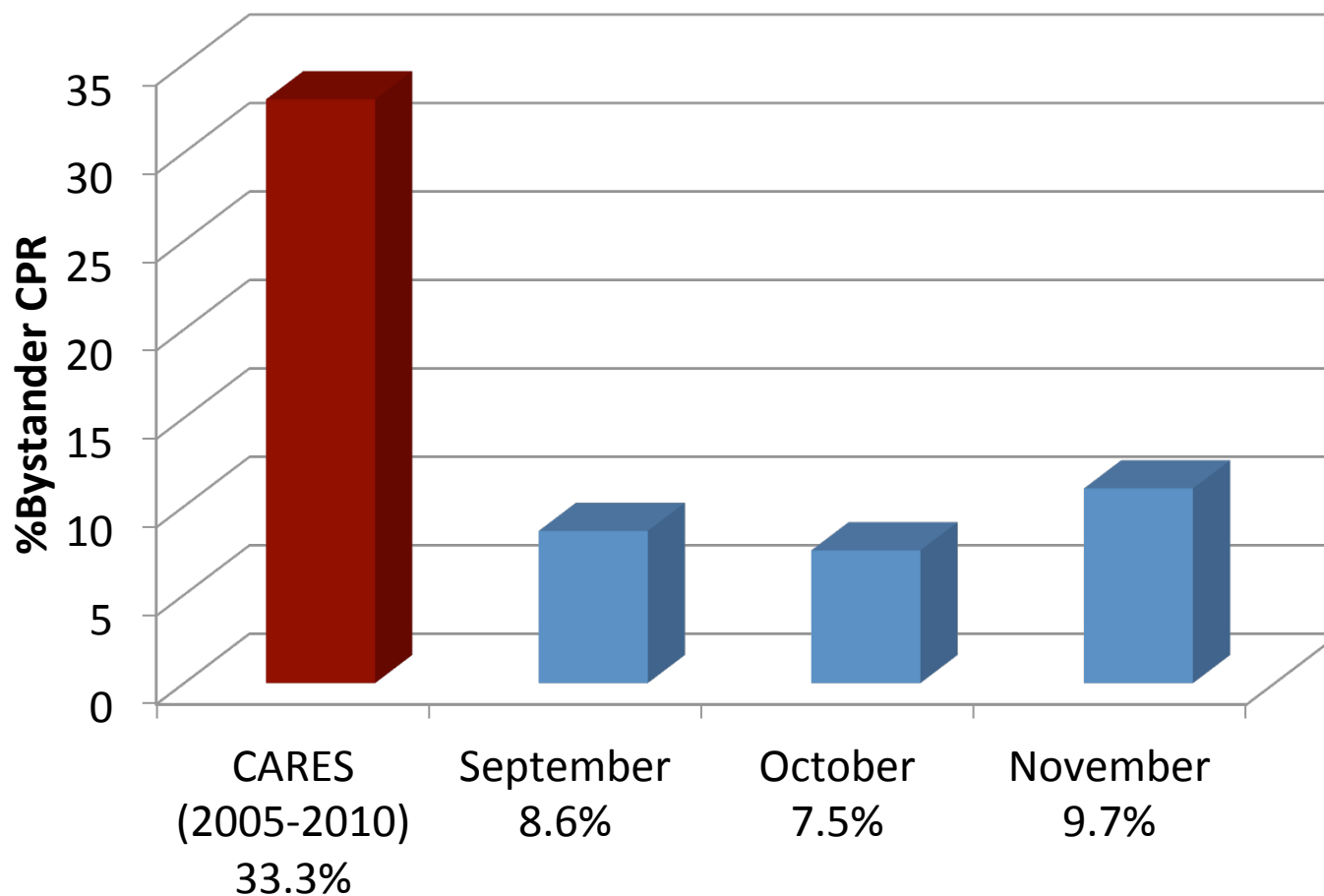


Utstein Survival





Bystander CPR





Lessons learned



- Must measure in order to improve.
- We are really just at the beginning.
- Help is out there.



Thank you

jweber@cookcountyhhs.org

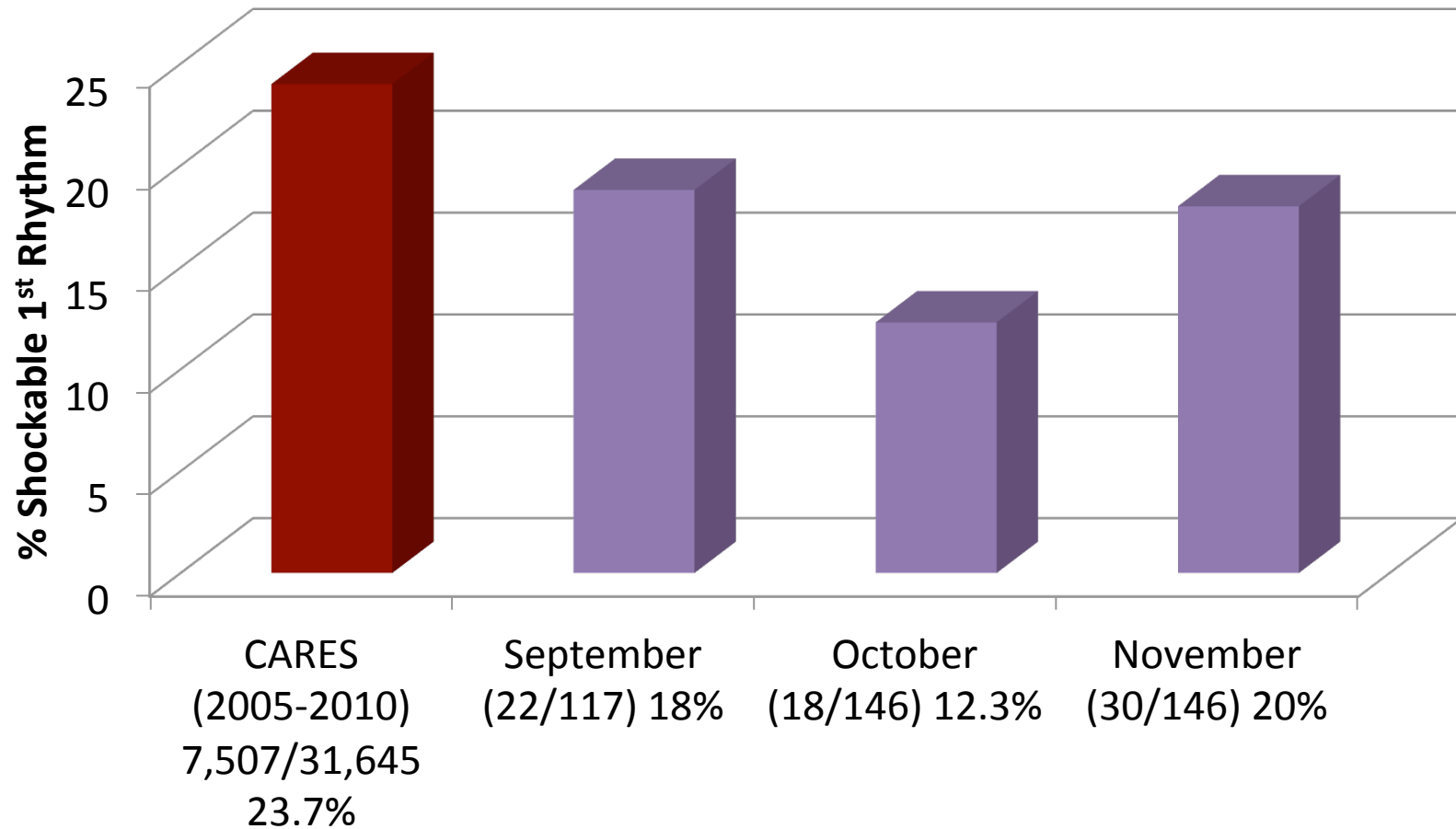
Incident Command For Cardiac Arrest

- Incident command language
- Team approach to cardiac arrest
- Pre-defined roles
- On scene resuscitation
- Continuous chest compressions
- Early defibrillation





Shockable 1st Rhythm





Future Directions



- Cardiac Arrest Centers: Jan 2014
- Dispatch simulation training
- Formal structured QA and feedback on every arrest.
 - Monitor downloads March 2014