



# A Crash Course in Runway Disaster Management: Lessons from Asiana 214

Clement Yeh MD

Medical Director

San Francisco Fire Department

San Francisco Department of Emergency Management

University of California San Francisco

# Disclaimer

“The opinions expressed in this presentation are those of the author, Clement Yeh, and may not reflect the official analyses or opinions of the San Francisco Fire Department, Department of Emergency Management, University of California San Francisco, San Francisco International Airport, San Francisco City & County, San Mateo County or the National Transportation Safety Board.”

# Overview & Objectives



- Incident Overview
- Response Challenges
- Considerations for change in your area

# Take Home Points



- “Normalize” Disaster Response
- Plans + Planning + Practice
- Anticipate Comm Issues
- Overall System Management

July 6th, 2013 11:27AM PST



























# Incident Timeline



- 1132 SF DEC Notified of OZ214 Crash
- 1134 Initial Dispatch
- 1134 First Alarm Struck
- 1140 Yellow Alert Declared
- 1145 First SFFD Units on Scene
- 1146 Second Alarm requested
- 1147 Red Alert Declared, First SFFD Ambulance, IC on scene
- 1151 Third Alarm Struck
- 1159 10/1 Modified Response for SF Announced
- 1215 Passenger Count & Manifest Reported
- 1222 First SFFD Ambulance (M86) Transporting to SFGH
- 1259 All patients transported off tarmac
- 1315 190 Passengers at Gate 91 International Terminal
- 1824 All Patients Transported, Red alert Secured
- 1917 IC Closes Incident

# Communications



- Language barriers
- Instantaneous
- Comm disruption should be expected
- Mitigating factors
  - Interpreters
  - Redundancy
  - Fallback plans

# Communications



David Eun

@Eunner

Follow

I just crash landed at SFO. Tail ripped off. Most everyone seems fine. I'm ok. Surreal... (at @flySFO) [pic] — [path.com/p/1lwrZb](https://path.com/p/1lwrZb)

12:13 PM - 6 Jul 2013



Path @path

30,243 RETWEETS 3,392 FAVORITES

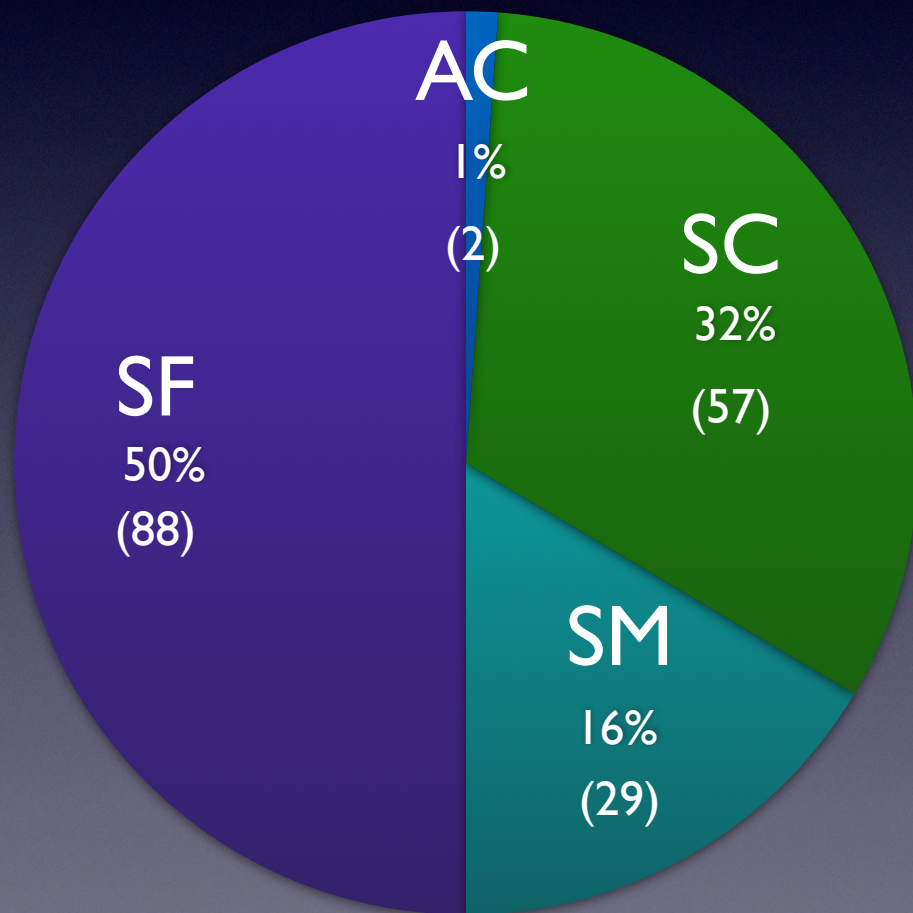


# Patient Characteristics

Passengers and crew			
Nationality	Passengers	Crew	Total
Canada	3	0	3
China	141	0	141
France	1	0	1
India	3	0	3
Japan	1	0	1
Others	3	0	3
South Korea	77	14	91
Thailand	0	2	2
United States	61	0	61
Vietnam	1	0	1
Total	291	16	307

- 307 Passengers on board
- 291 Passengers
- 16 Crew
- 179 patients transported to area hospitals

# Patient Distribution: Counties



# Patient Distribution: Hospitals



- Stanford: 57
- SFGH: 53
- Mills Peninsula: 14
- UCSF: 14
- Kaiser Redwood City: 10
- CPMC (all campuses): 9
- Kaiser San Francisco: 5
- St. Francis: 7
- Sequoia Hospital: 5
- St. Mary's: 4
- Eden: 2

# Patient Distribution



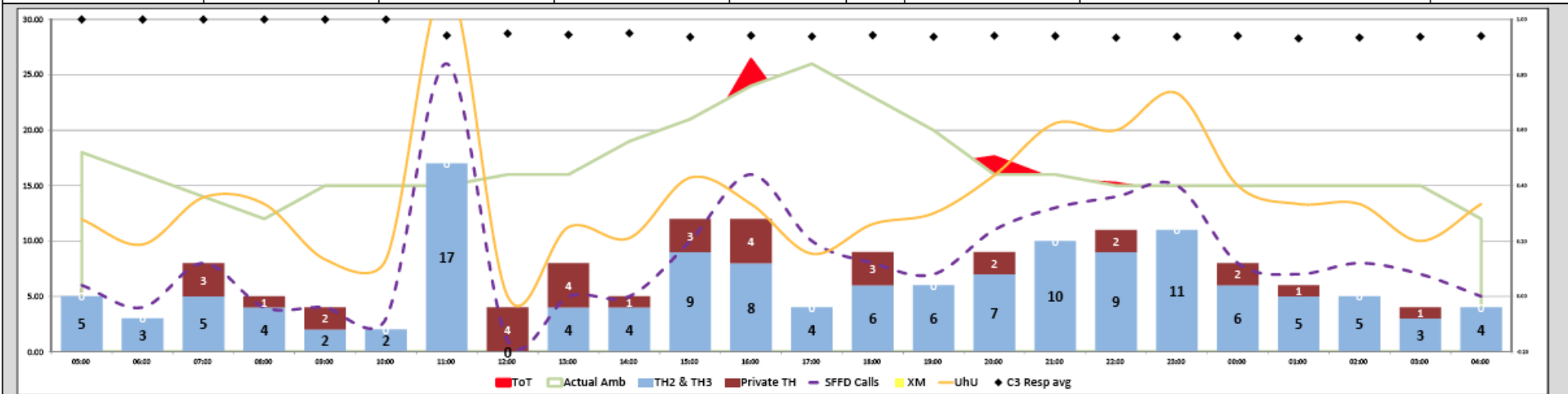
- Language resources
- Reunification
- Special populations
  - Trauma
  - Burns
  - Pediatrics

# System Impact

**Saturday, July 06, 2013**

EMT Operations Report - Performance

Hours Staffed	Time on Task	Non-Transport	Private TH	XXM	Ambulance Shifts	Response Market Share	Shifts Needed
361.0	147.69	27%	36	0	30	79%	32
Estimated Hours	SFFD EMS Resp	Total System Resp	SFFD TH	UhU			%HoT
341.0	205	260	149	0.41			0.49





# Take Home Points



- “Normalize” Disaster Response
- Plans + Planning + Practice
- Anticipate Comm Issues
- Overall System Management