

MEMPHIS FIRE DEPARTMENT

# Delays in Deployment

Unplanned Issues  
you should Plan for..

Joe Holley, MD FACEP FAEMS

**Credentials are up to date**

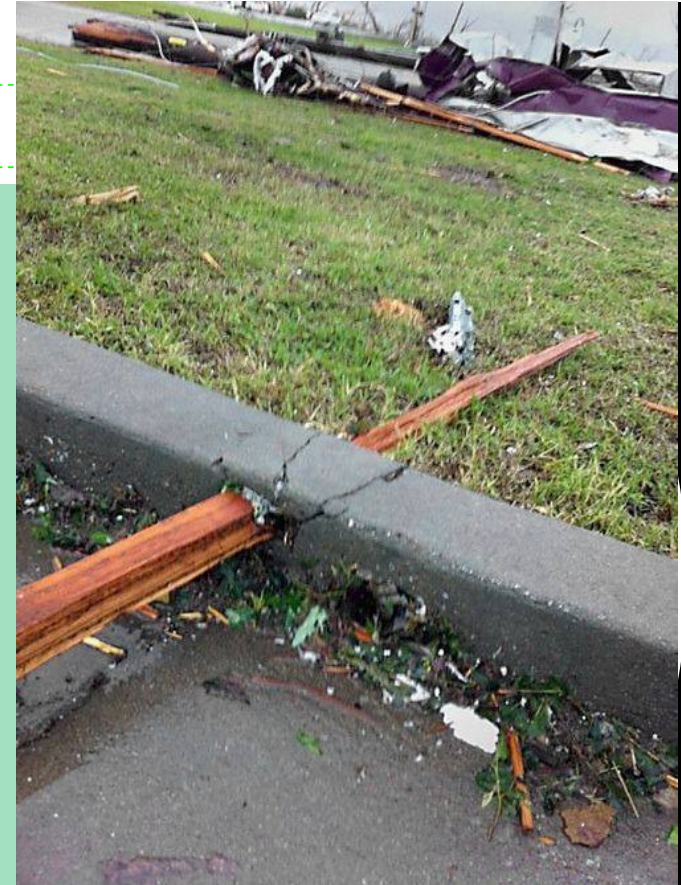
**Call in the troops, volunteers**

**Deployment health screening:**

**Preapproved screening checklist based  
on consistent standards approved by leadership  
before its needed**

**Hypertension most common issue,  
NFPA 1582 - Standard on Comprehensive Occupational  
Medical Program for Fire Departments**

**2 checks and decide**



**Meds, glasses,  
contacts, etc:**

**See it  
go get it  
Go Home**

**May need  
assistance with  
pharmacy issues for  
additional supplies**





Carefully screen you deploying team for illness that may affect the teams ability to function







**Dogs...**  
**medications**  
**supplies**  
**education**







Prepare to handle animals

## **Post Deployment:**

**Engage resources (FEMA USaR, CDC, etc) in regards to the need for monitoring.**

**Will vary based on location, situation, and exposures.**

**In general, infectious issues will show up within 2 weeks**

**Toxins may require long term monitoring**


### **WTC Health Monitoring Program**

**Psychological monitoring is also long term  
and much more challenging.**

**Depression and PTSD may manifest  
much later.**



Chris Bosche, MD



**Thank you, be safe**

**[joeholleymd@gmail.com](mailto:joeholleymd@gmail.com)**