

# FORT LAUDERDALE AIRPORT SHOOTING JANUARY 6, 2017



Kenneth A Schepke, MD  
Medical Director  
Broward Sheriff's Office and Palm Beach County Fire Rescue



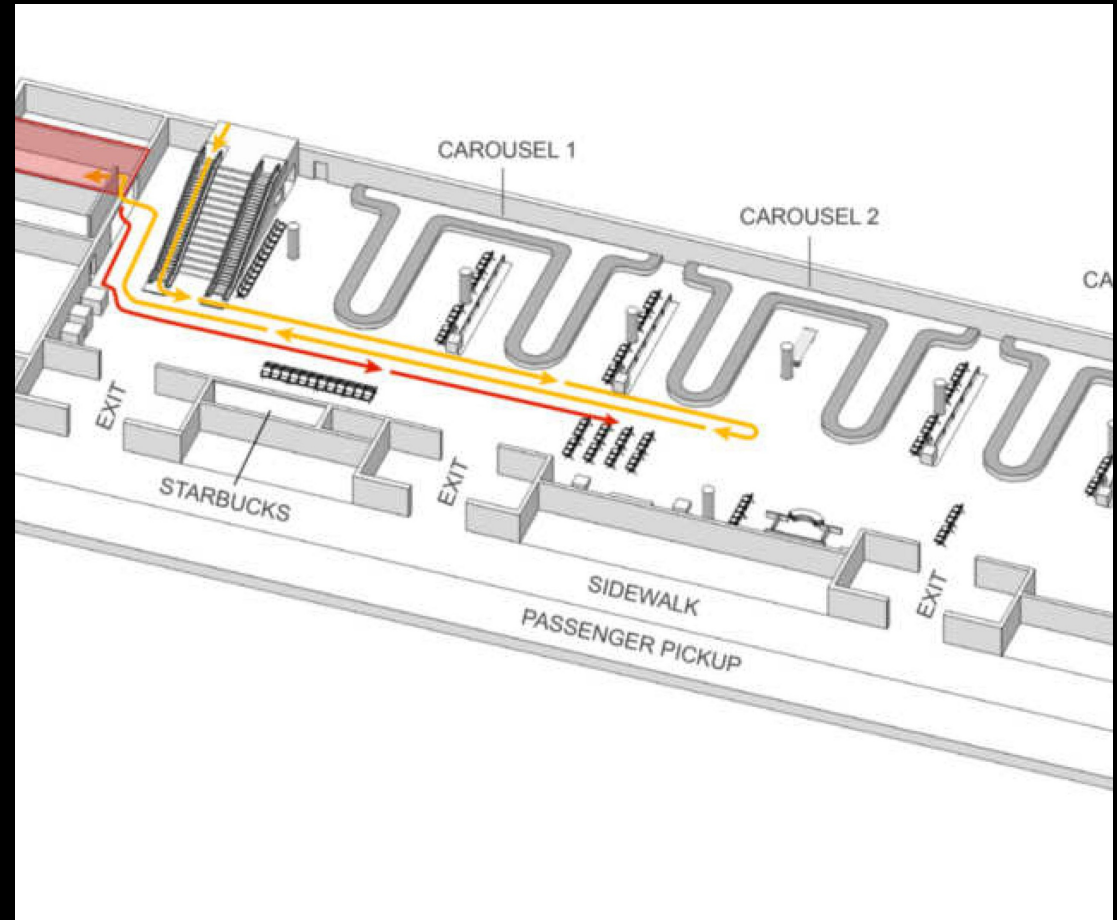
What Really Happened?

Why Did The Event Last So Many Hours?

What Can We Do Better?

## PATH OF SHOOTER

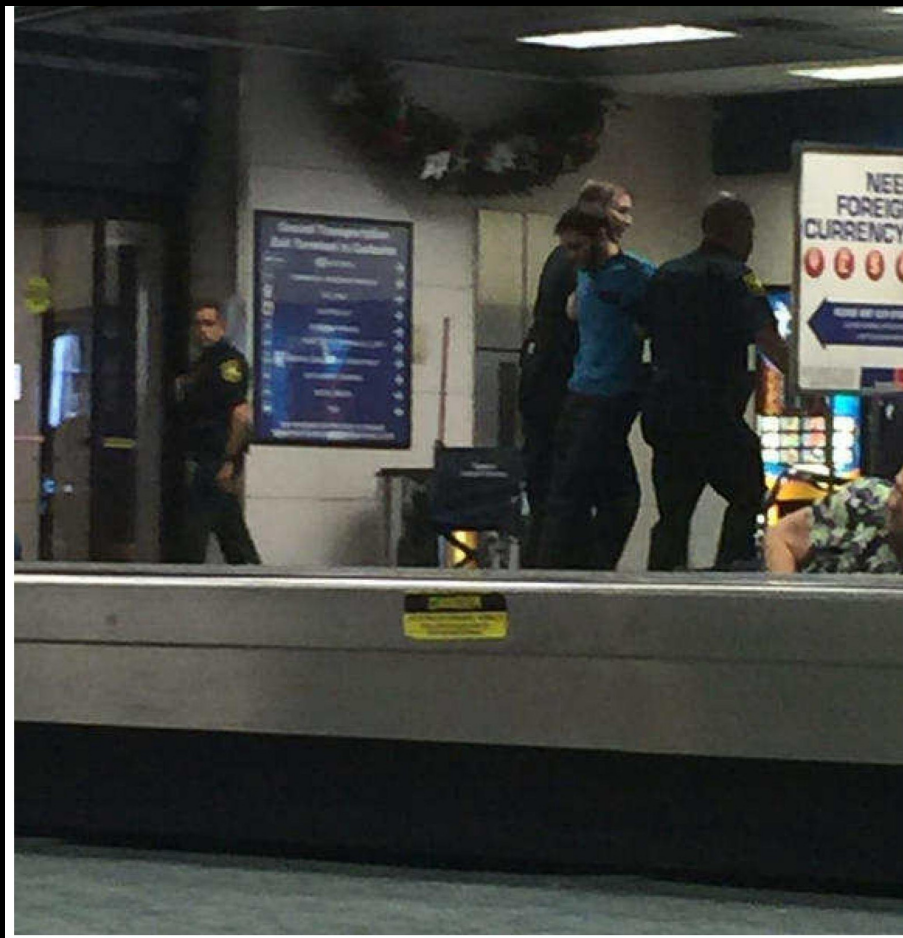
- Arrives on Delta flight from Alaska
- Retrieves stowed handgun from baggage carousel
- Loads gun in nearby bathroom stall.
- He then returns to the baggage carousel



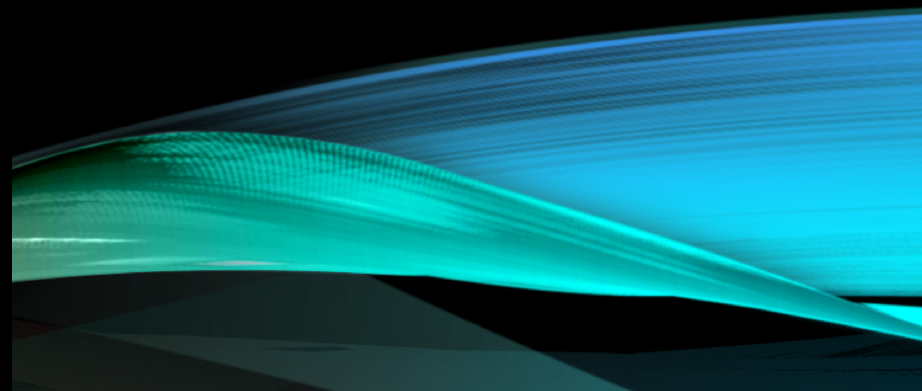
# SECURITY FOOTAGE OF SHOOTER







85 SECONDS  
OF SHOOTING  
FOLLOWED BY  
HOURS OF  
CHAOS



COMMUNICATION IS KEY



“We’re Not Gonna Make it”

ANOTHER SHOOTER?







# MASS PANIC HITS THE AIRPORT

<https://m.youtube.com/watch?v=iMNCqU8uIJY>





# VICTIM COUNT

## Shooting Victims

- 5 Dead
- 6 Wounded

## Mass Panic Victims

- 37 Wounded

# PROBLEMS IDENTIFIED

- Undercover Officers Guns Drawn wearing Masks
- 2000 Police Officers Responded some self deploying leaving cars unattended and an “impassable parking lot”
- TSA Officers Run for Cover
- Mass panics erupted when bystanders overheard officers mention possibility of “shots fired”
- Once passenger running began, it spread rapidly



## PROBLEMS IDENTIFIED

- Medical Issues Continue in Addition to Trauma Victims
- Flights still arriving while people are running onto taxi and tarmac
- 12,000 People left stranded on tarmac for up to 10 hours without food, water, toilet, meds





FINDING HIDDEN PEOPLE  
HOURS LATER





# LESSONS LEARNED

Need	Mass communication to public
Need	Reliable communication with responders
Need	A way to sound the all clear
Need	Evacuation/sheltering/basic med and food needs for mass gatherings

# MASS EVACUATION VEHICLE





# LESSONS LEARNED

Need	PD Vehicle Staging that preserves ability to transport
Need	Control surrounding urban traffic to allow mass exodus
Need	Better unified command
Need	Immediate shutdown of flights



**London Ambulance Service**  
NHS Trust

# **An SAS RTF for an LAS RTC**

## **The response of the London Ambulance Service to the London Bridge terror attacks; why was this different?**

Dr Fionna Moore MBE

Previously CEO and Medical Director







**SAS  
support to  
MPS**



**The Emergency Services in London have been repeatedly tested over the last twelve months...**



# Incident summary from the last twelve months

- Croydon Tram crash, Major Incident
- Westminster Bridge attack, Major Incident
- **London Bridge attack, Major Incident**
- Finsbury Park attack, Significant incident
- **Grenfell Tower fire, Major Incident**
- Public Disorder at Emirates, Significant Incident
- **Parsons Green Tube, Major Incident, downgraded to Significant Incident**
- Exhibition Road, Significant Incident
- Covent Garden, Significant Incident



# London Bridge terrorist attack

3 June 2017

MAJOR incident  
48 injured / 8 dead





# London Bridge; the LAS response

**Saturday 3<sup>rd</sup> June at 21:58hrs – a van vehicle drove at speed into multiple pedestrians on London Bridge, killing three. The assailants abandoned vehicle, proceeded on foot armed with 12 inch ceramic bladed knives and imitation suicide vests & ran towards Borough Market**

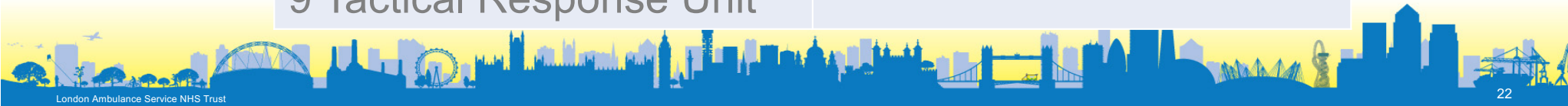


# LAS Response

- Specialist Operations Centre opened
- Full Major Incident Pre Determined Attendance including

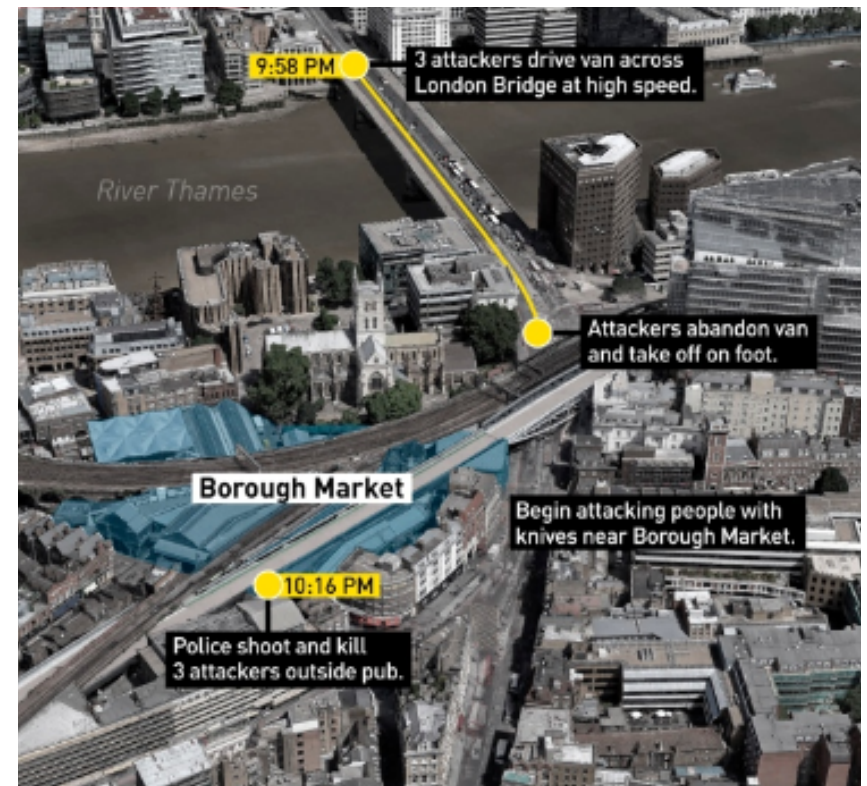
10 Operational Commanders	London's Air Ambulance
29 Ambulances	Equipment Vehicles
14 Solo responders	Tactical Advisor
3 Advanced Paramedics	Medical Advisor
2 HART Teams	PLATO Command team
9 Tactical Response Unit	

- St



# Scene Geography

- Rapidly changing
- Sectorised – North / South / Specialist
- North Sector - CCP established quickly patients evacuated from bridge by police / members of public / LAS
- Sectors split by assailants abandoned vehicle, cordon around
- South more challenging







# Response to London Bridge

98 frontline staff  
66 ambulance vehicles  
14 control room staff







# Timeline and Response

**22:09 First 999 call received to reports of road traffic collision pedestrian vs van**

22:11 First resources dispatched including a motorcycle responder and single responder in car

22:11 First operational commander dispatched to scene

**22:12 Surge in 999 calls received at both control rooms**

**22:13 First resource on scene**

22:16 Initial windscreen report stating multiple casualties

**22:17 MPS declared major incident and establish tri-service conference call**

22:17 Confirmation via ES5 (interoperability talkgroup) **Police treating as Terrorist Incident**

22:18 Reports of member of the public hiding in buildings for safety

**22:18 Auto-dispatch turned off**

**22:19 Advanced paramedic declared a major incident and provides initial METHANE report**

22:19 999 call advising men had walked in to a restaurant and stabbed one of the customers

22:20 call from other Ambulance Services as London 999 calls presenting to them

**22:25 First operational commander arrived on scene**

22:25 Reports of shots being fired

22:27 Armed police on scene and members of public evacuating the area

**22:28 Specialist Operations Centre in operation and incident talk groups opened**

22:30 On call tactical commander en route to Waterloo SOC

**22:31 MPS declare “Operation PLATO”**

**23:26 Update report from BRONZE at NORTH Rendezvous point**

23:26 Ambulance Intervention Team confirmed London Bridge clear of casualties

**23:44 BRONZE MEDIC NORTH – reports possible active shooter**

**23:46 Active shooter being reported on the Southbank**

**23:52 Update from Bronze Medic – Active shooter both side of London Bridge, Special Forces deployed**

00:01 Information from Multi-agency Tactical Meeting

00:20 Request from tri-service conference call for 2 ambulance to enter hot-zone with armed escort

**03:03 Incident downgraded to significant incident**





# Challenges at London Bridge

- Time of evening that incident occurred
- Already a busy night in London
- 999 calls – all routine types of calls
- Scene rapidly changing
- Where was safe.....
- Resources sent to Rendezvous Points (RVP)
- South of river rendezvous point
- Ambulance Personnel stranded
- Police information
- Casualty clearing
- Declaration of PLATO
- Arrival of special forces
- Triage
- Media
- Run, Hide, Tell





# What have we learnt?

- Working out what's going on is difficult
- We will get there quick – which is a risk!
- Maintain situational awareness
- Keep the hospitals informed
- Triage is dynamic
- Benefits of close interagency working
- Staff welfare – same staff involved



# And.....

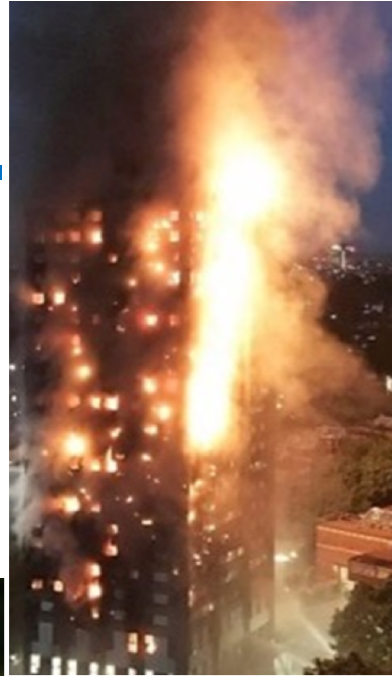
The next major incident may be sooner than you think

## Grenfell Tower fire

14 June 2017

MAJOR incident

70+ injured / 71 dead





# QUESTIONS?



KSchepcke@pbcgov.org  
Fionna.Moore@secamb.nhs.uk





# Thank you

