

# VIP and Executive Medicine at Mass Gatherings

---

Asa M. Margolis DO, MPH, MS, FACEP, FAEMS  
Glenn H. Asaeda, MD, FACEP, FAAEM, DABEMS  
C. Crawford Mechem, MD, FACEP, FAEMS



No Disclosures of Any Financial or  
Commercial Interests

# Roadmap



What are challenges related to mass gatherings involving dignitaries?



What are some lessons learned from the 2015 Philadelphia Papal visit?



Are there dedicated units who specialize in the care of dignitaries?



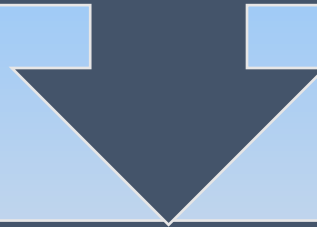
What is the process for designating a National Special Security Event?



What are the resources and who are the partners unique to these events?

# Background

Dignitaries or celebrities at mass gathering events can add challenges for EMS professionals involved in planning and operations



These include:

Impact of dignitary protection & security on event

Dignitary's need for privacy, discretion

Staff background checks, credentials, vehicle movement, patient care

Interaction between dignitary's medical staff with local EMS

Impact on routine medical needs of the community

# Philadelphia's Experience

- Republican National Convention, 2000
- Live 8 concert, 2005
- World Meeting of Families, Papal visit, 2015
- Democratic National Convention, 2016
- NFL Draft, 2017
- Eagles Super Bowl victory and parade, 2018
- Annual Welcome America July 4<sup>th</sup> celebration
- Annual Live Nation Made in America Festival





# World Meeting of Families/Papal Visit

---

Largest meeting of Catholic families in world

---

Held every ~ 3 years

---

Sept. 22-25, 2015, at Philadelphia Convention Center

---

Pope to attend outdoor Festival of Families Sept. 26/27

---

Multiple days, multiple venues, many other dignitaries

---

Planning began a year in advance

# Planning for the WMOF & Pope Francis

- Challenges for medical planning:
  - Anticipating crowd size (1-3 million?)
  - Crowd demographics, baseline health status
  - Estimating number of patient encounters
    - How many could be treated on-site vs. needed transport
- Hospitals anticipating patient surge, staff access issues
  - Hesitant to let staff work at venue
  - PFD needed higher level providers to decrease transports
- Not enough ambulances for event & ongoing needs of city



# Planning Challenges

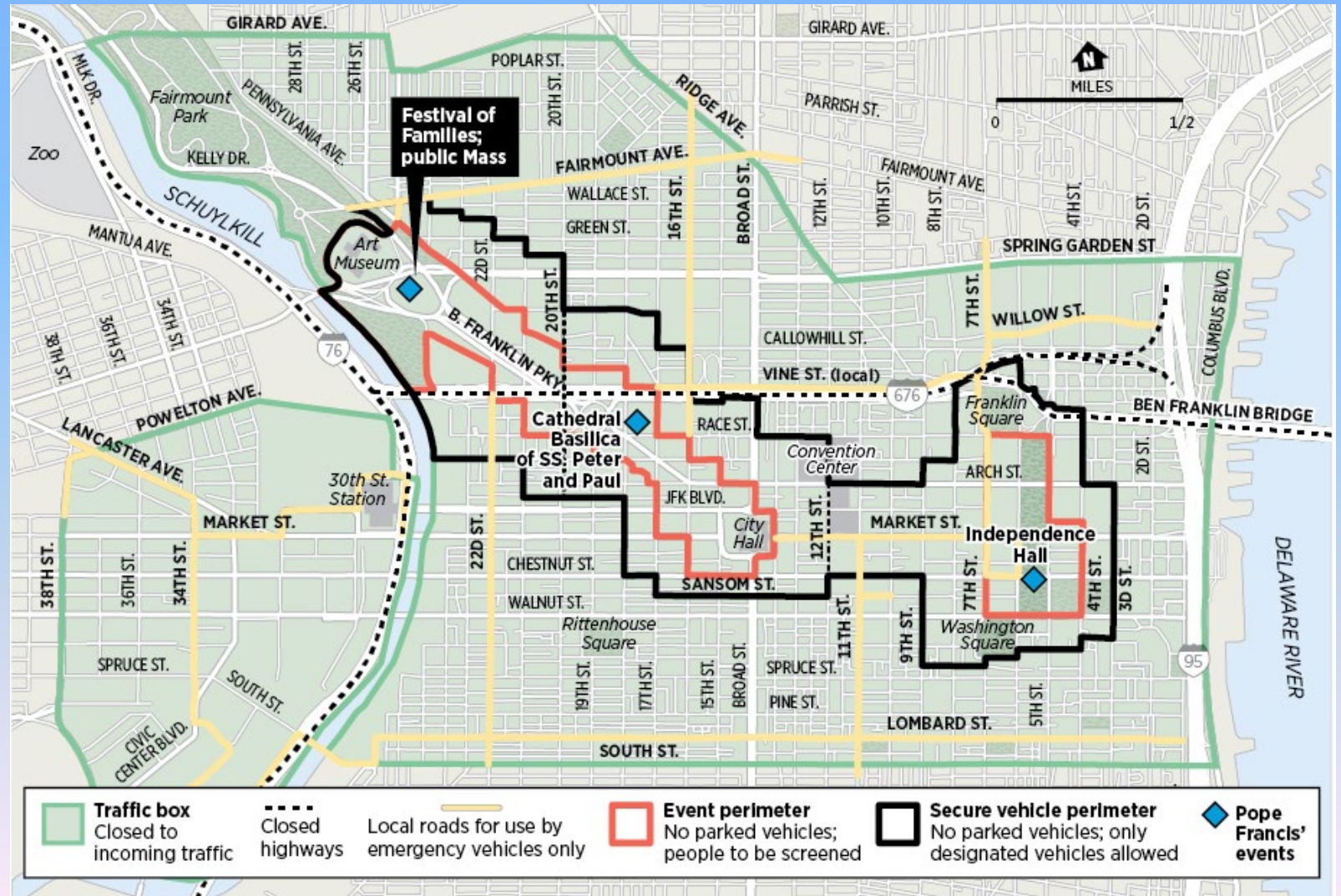
- DHS-designated National Security Special Event
  - USSS was lead agency for operational security
  - PFD lead agency for planning on-site medical care
- Many security issues to consider
- Security perimeter enclosed much of Center City, including several hospitals
  - Could ambulances get to hospitals, and back?
- When Pope on-site, all movement **stopped**





# Road Closures

- Traffic box
- Event perimeter
- Secure vehicle perimeter
- Closed highways



# Medical Station Capabilities

---

- Climate-controlled
- Capacity for ~ 50 patients, including critically-ill
  - Had ventilators, cardiac monitors
- Could manage trauma, cardiac patients, OB, kids
- 1 had landing zone for helos
- Staffed by PA Surge Medical Assistance Response Teams, TX Disaster Medical Assistance Team

# First Aid Tent Capabilities

---



**Capacity for 20 pts of  
low/moderate acuity**





# The Pope Arrives





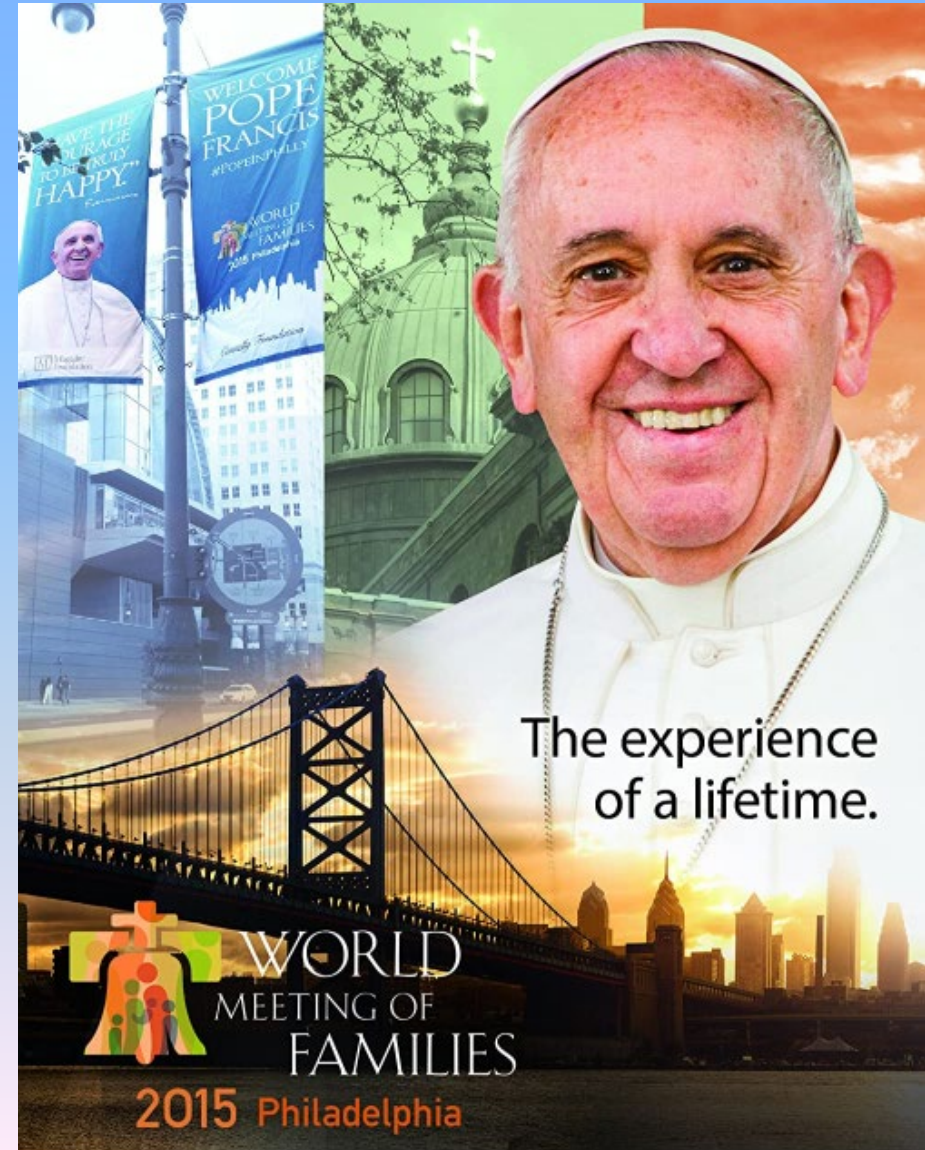
And The Security





# Patient Encounters

- Temperatures for Sept. 26/27: 60°F-72°F
- Medical tents treated 199 pts, 21 transports
  - Excluding Band-Aids, Tylenol, etc.
- Total EMS responses within “the box”:
  - 423, with 129 transports
- Activity for entire EMS system: ~ normal



## Challenges & Lessons Learned



Uncertainty was  
greatest obstacle

Weather, crowd size, Papal  
itinerary, how many patients



Getting sufficient volunteers



Security challenges



Many outside medical assets  
(state, feds, military)

Not used to working  
together



Planned for the worst – fortunately all worked out

# NYC's Experience

- Mass Gatherings (sporting/concert type events)
- Fluid mass gathering events (NYC Marathon, NYC 5-Borough Bike Tour)
- Dignitary Protection (Presidential visits/UNGA)



# Dignitary Protection Unit (DPU)

- Specialty training with local Secret Service (2-day)
- Background check and clearance
- How to function within a motorcade (normal operations vs "attack" situations)
- How to function with the dignitary's own medical staff



# DPU Politics

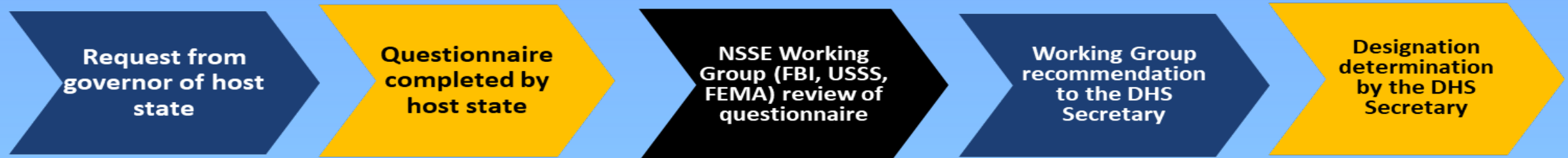
- President Trump and family lived in the Trump Tower in Manhattan
  - "Secure Zone" around Trump Tower - made response for citizens challenging
- UNGA grounds considered extraterritorial under administration of the United Nations despite physically being in Manhattan in the US
- UNGA - some dignitaries cannot be at the same location at the same time and cannot even cross paths
- Hospital selection can be challenging
- DPU starts from the immediate arrival of the dignitary at the airport
- Depending on the dignitary, travel within NYC challenging







# What is the Process for Designating an NSSE?



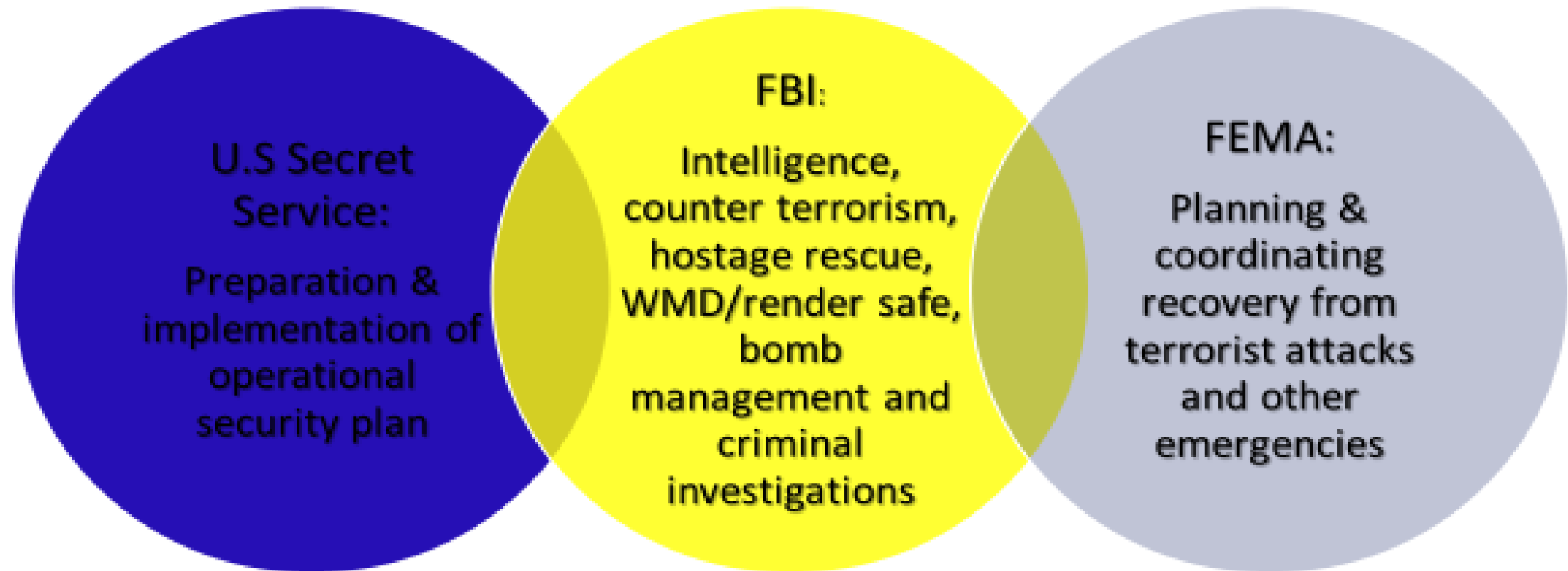
## Designation Factors:

Federal participation  
Dignitary attendance  
Size of the event  
Significance of the event  
Duration of the event  
Location of the event  
Recurring nature of the event  
Media coverage  
State and local resources  
Threat assessment

## *NSSE Authority*

*Presidential Decision Directive 62*  
*Homeland Security Act of 2002*  
*Homeland Security Presidential Directive 5*  
*Homeland Security Presidential Directive 7*  
*Title 18, Part 2, Chapter 203, Section 3056*  
*Presidential Policy Decision 22*

# Federal Agency Roles & Responsibilities (PPD 22)

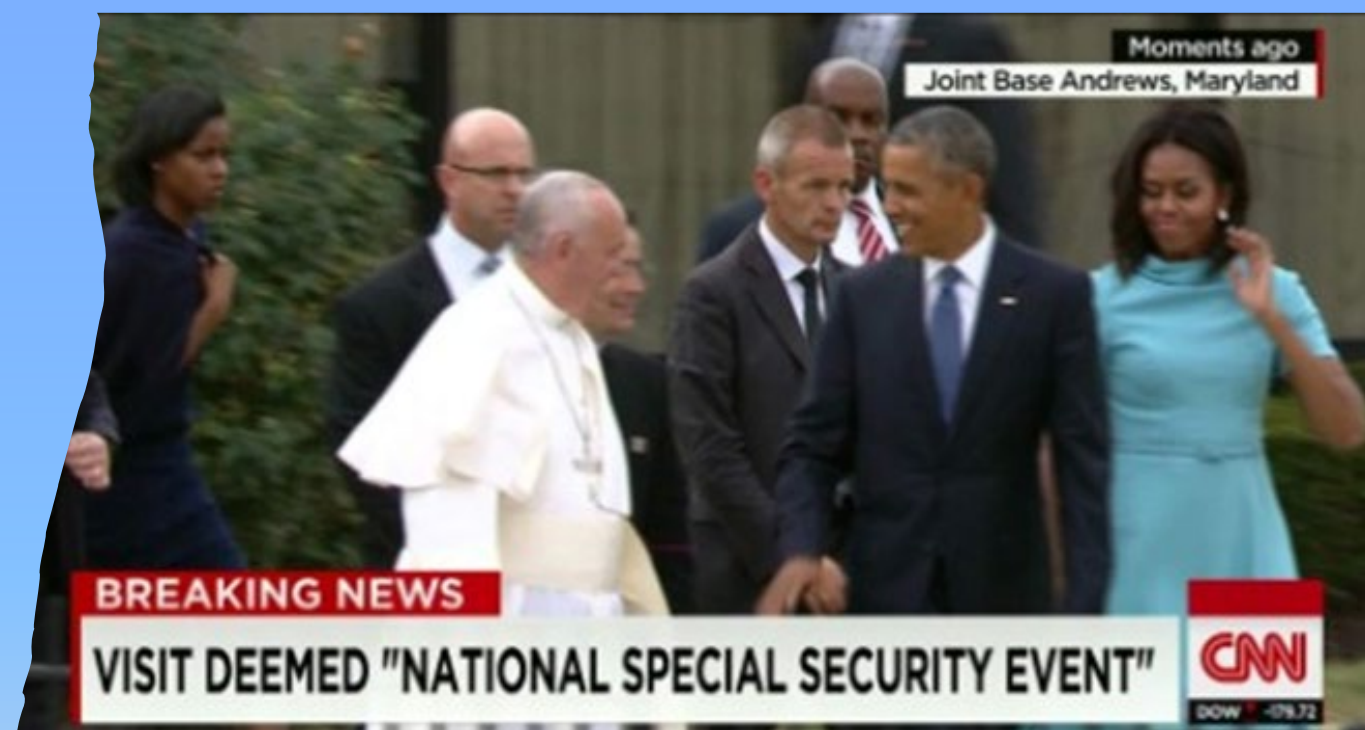


How Do We  
Accomplish  
Collaboration?





# NSSE Planning





# Health & Medical Subcommittee



Co-Chairs

EMS Medical  
Director

EMS

Medical/Aid  
Stations

Hospital  
Systems

Public Health

Food Safety  
& Defense

L.E. Support

Vulnerable  
Populations

# No Fail Mission

## Security Requirements Affecting EMS Operations

- The secure perimeter (ingress and egress)
- Protectee movements
- Acute care facilities / referral centers

## On-Site Medical Direction

- Face-to-face with other EMS medical directors
- Maintaining ongoing situational awareness
- Ability to deal with the “one-off” scenario

## Outside Agency Support

- Medical support teams
- TEMS medics/physicians
- Personal physicians and medical teams for dignitaries





Multi-agency Coordination