

# Scaling up De-Escalation Preparedness or Preventing Escalation

Robert B Dunne MD, FAEMS, FACEP  
Medical Director  
Detroit FD/DEMCA

- What are predictors of violence on scene?
- What strategies might work to prevent escalation?
- What can prevent or minimize injuries to prehospital providers?

# Example



# Survey Data

## MICHIGAN

- Violence more common against females
- 45% of assailants were intoxicated
- 33% of assailants were mentally ill
- 10% of assailants were **not** patients
- Urban equivalent to other locations
- **CAN HAPPEN ANYWHERE ANY TIME**

## NATIONAL

- 69.0% experienced at least one form of violence in the past 12 months
- Verbal violence was more prevalent than physical (67.0% vs. 43.6%)
- Urban personnel had increased odds of experiencing physical and verbal violence.

### **A NATIONAL DESCRIPTION OF VIOLENCE TOWARD EMERGENCY MEDICAL SERVICES PERSONNEL**

Mirinda A. Gormley, MSPH, NRP, Remle P. Crowe, BS, NREMT, Melissa A. Bentley, MS, NRP, Roger Levine, PhD

# De-escalation vs Prevention of Escalation

- One study showed reduction in aggression from 37% to 3% by instituting preventive training. (Taylor, 1999)
- A study in VAs showed 92% decline in violence by institution of preventive measures. (Knapp 2013)
- Training using verbal Judo program after
- Hot Wash/PI on incidents
- PEER support

# Safety Training

- Prevention of Escalation
- Learn how to talk to people (Verbal Judo)
- Needs to be a core competency of every department – Many options - DT4EMS
- Staging Protocols – evidence based
- Personal Defense
- Linkage with Law Enforcement
- Think “seat belt”
- Survival Mindset

# Equipment

- Ballistic Vests?
  - Other Areas
    - Eagles Survey
  - Detroit Issued
- Weapons?
  - Firearms?
  - Less Lethal?
- Limited Data



Operations

## Is It Time for an Armed EMS System?

*The decision to arm EMTs and paramedics is a complex and multifaceted decision.*

Shawn Soler

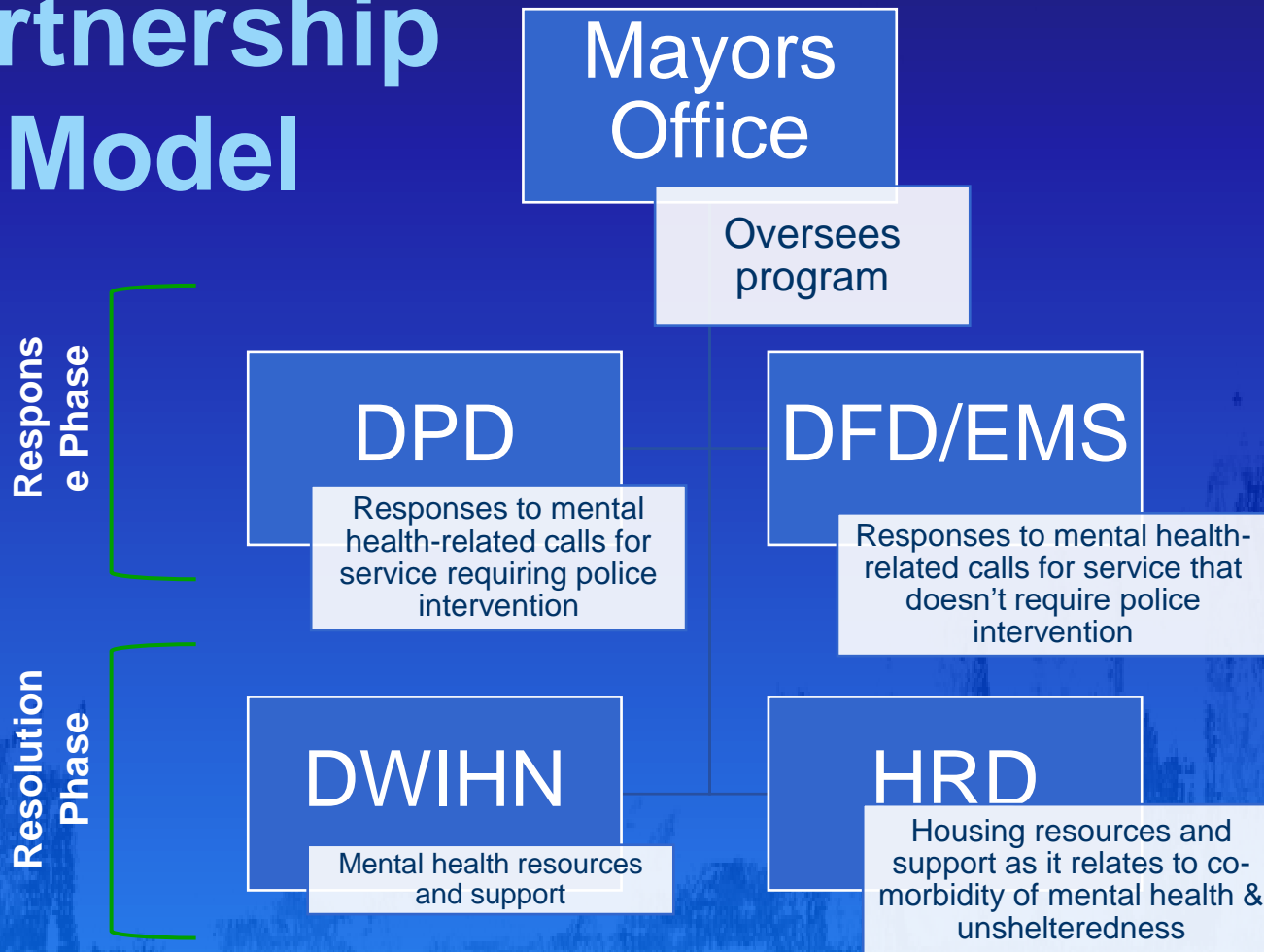
02.29.2024

# Educated on Response Protocols

- Integrated Teams (ALS, SW, +/- LEO)
- Reeducated on Medical Restraint
- Physical restraints should = medication
- Versed – Agitation protocol, best evidence is from ED's
- Valium – Less effective
- Ketamine – commonly used around US



# Detroit Partnership Model



- It is a process that continues
- Retraining/updates/Process Improvement
- Better planning with law enforcement
- Staging issues
- Dispatch issues/alert
- Continued focus situational awareness

Thanks for all the support